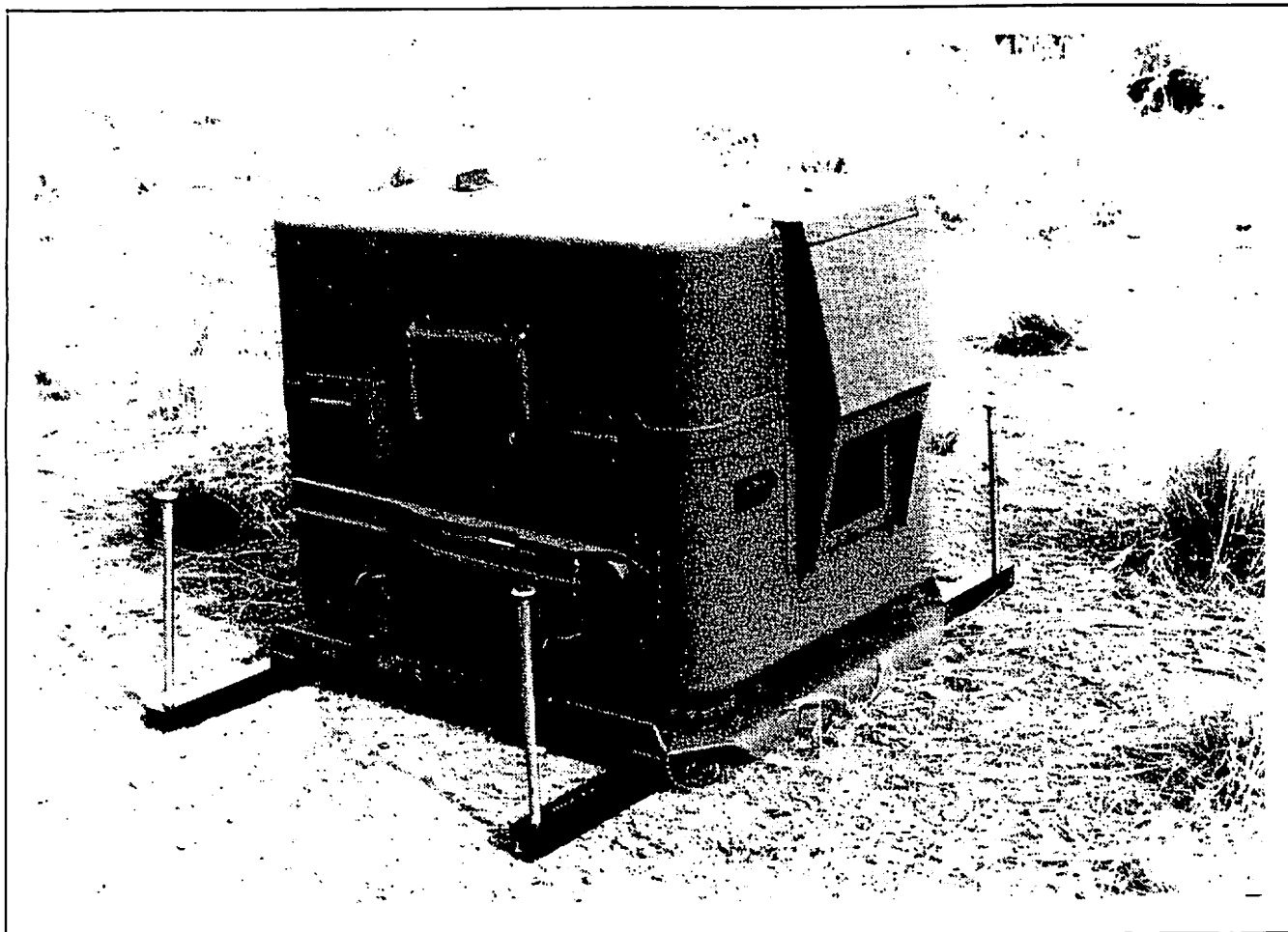


# ***MINI-PLASI***

***Pulse Light Approach Slope Indicator***



## **ILLUSTRATED PARTS MANUAL**

*Manual Number PLA052      21 April 2003*

**APPLICABLE TO  
DA3501-3**

**MINI-PLASI (120 VAC) HELICOPTER SIGNAL**



**DEVORE AVIATION CORPORATION**  
ALBUQUERQUE, NEW MEXICO, USA OF AMERICA

6104B JEFFERSON NE, ALBUQUERQUE, NEW MEXICO 87109, USA · TEL (505) 345-8713 · FAX (505) 344-3835 · EMAIL devoreav@att.net

**MINI-PLASI ILLUSTRATED PARTS LIST**

IPL Figure 1	MINI-PLASI Assembly .....	5
IPL Figure 2	Lower Case Assembly .....	7
IPL Figure 2.1	Lower Case Assembly .....	8
IPL Figure 3	Lower Housing Assembly .....	11
IPL Figure 3.1	Lower Housing Assembly .....	12
IPL Figure 4	Upper Case Assembly .....	17
IPL Figure 4.1	Upper Case Assembly .....	18
IPL Figure 5	Upper Housing Assembly .....	21
IPL Figure 6	Pulse Generator Assembly .....	24
IPL Figure 6.1	Pulse Generator Assembly .....	25
IPL Figure 6.2	Pulse Generator Assembly .....	26



## MINI-PLASI ILLUSTRATED PARTS LIST

### INTRODUCTION

This illustrated parts manual is designed to permit identification of replacement parts, when necessary for the MINI-PLASI. Parts lists identification will include the following breakdown information:

1. Item Number column identifies the individual part with its corresponding illustration.
2. Part Number column identifies the DeVore Aviation Corporation Part Number, AN, MS, NAS, or commercial Part Numbers used as original or replacement equipment.
3. Description column lists the functional name of the identified part. The name is used when placing an order for replacement parts.
4. Quantity column provides the total requirements of each individual part for noted assembly and subassembly.

Item Number	Part Number	Description	Quantity
-	DA3503-1	UPPER HOUSING ASSEMBLY	-
1	DA3315-1	UPPER CASE ASSEMBLY	1
2	DA1426-1	FILTER	1
3	DA3013-1	AIR FILTER COVER ASSEMBLY	1
4	NAS1149D0363K	WASHER	4
5	MS16998-29	SCREW, SOCKET HEAD	4

**\*\*\*\*NOTE\*\*\*\***

DO NOT USE THIS MANUAL FOR ANY PURPOSE EXCEPT FOR ITS INTENDED USE AS A PARTS REPLACEMENT CATALOG. MANUFACTURER SPECIFICATIONS, RATINGS, AND REPAIR PROCEDURES CAN BE FOUND IN THE MINI-PLASI SERVICE AND MAINTENANCE SECTIONS OF THIS MANUAL.

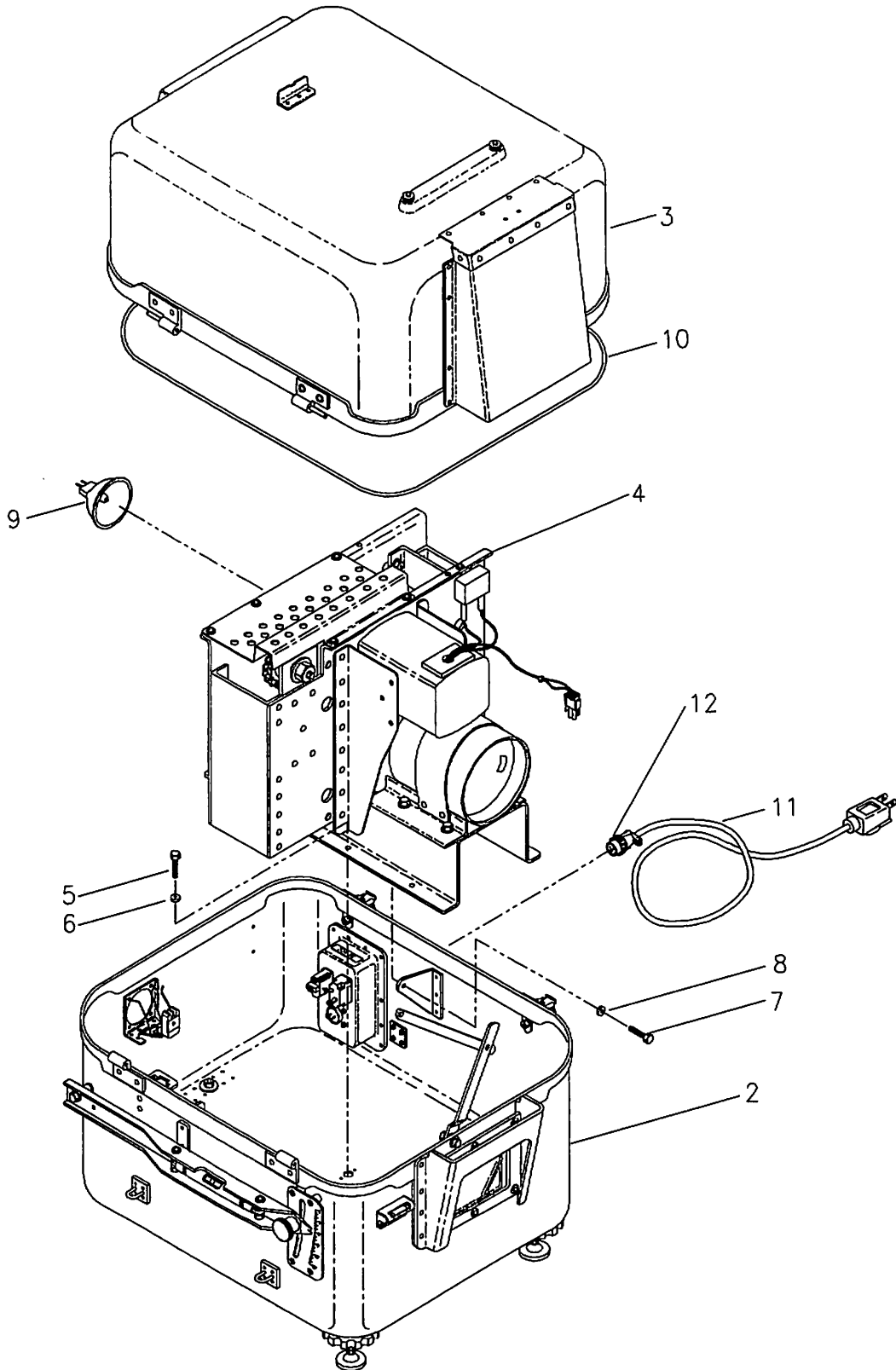


**NOTE:** When ordering replacement components or assemblies, be sure that the mounting hardware for the installation corresponds to the next higher assembly or installation procedure requirements.

DeVore Aviation Corporation of America reserves the right to change or cancel any assemblies, assembly components, parts lists, or illustrations represented here without prior notice. It further reserves the right to substitute components whenever such substitution does not interfere with the functional operation of the MINI-PLASI.



# IPL Figure 1 MINI-PLASI Assembly

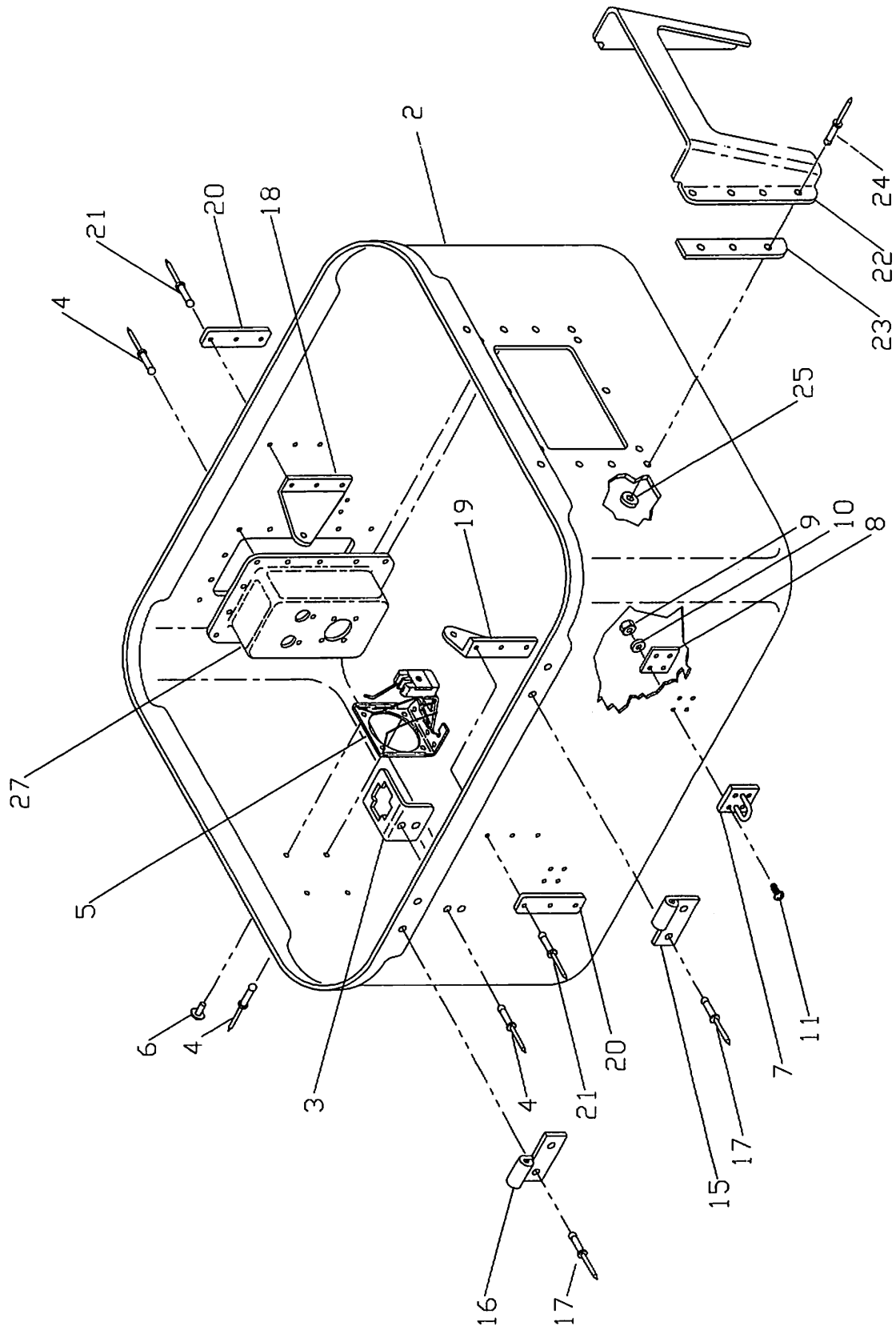


### IPL Figure 1 MINI-PLASI Assembly

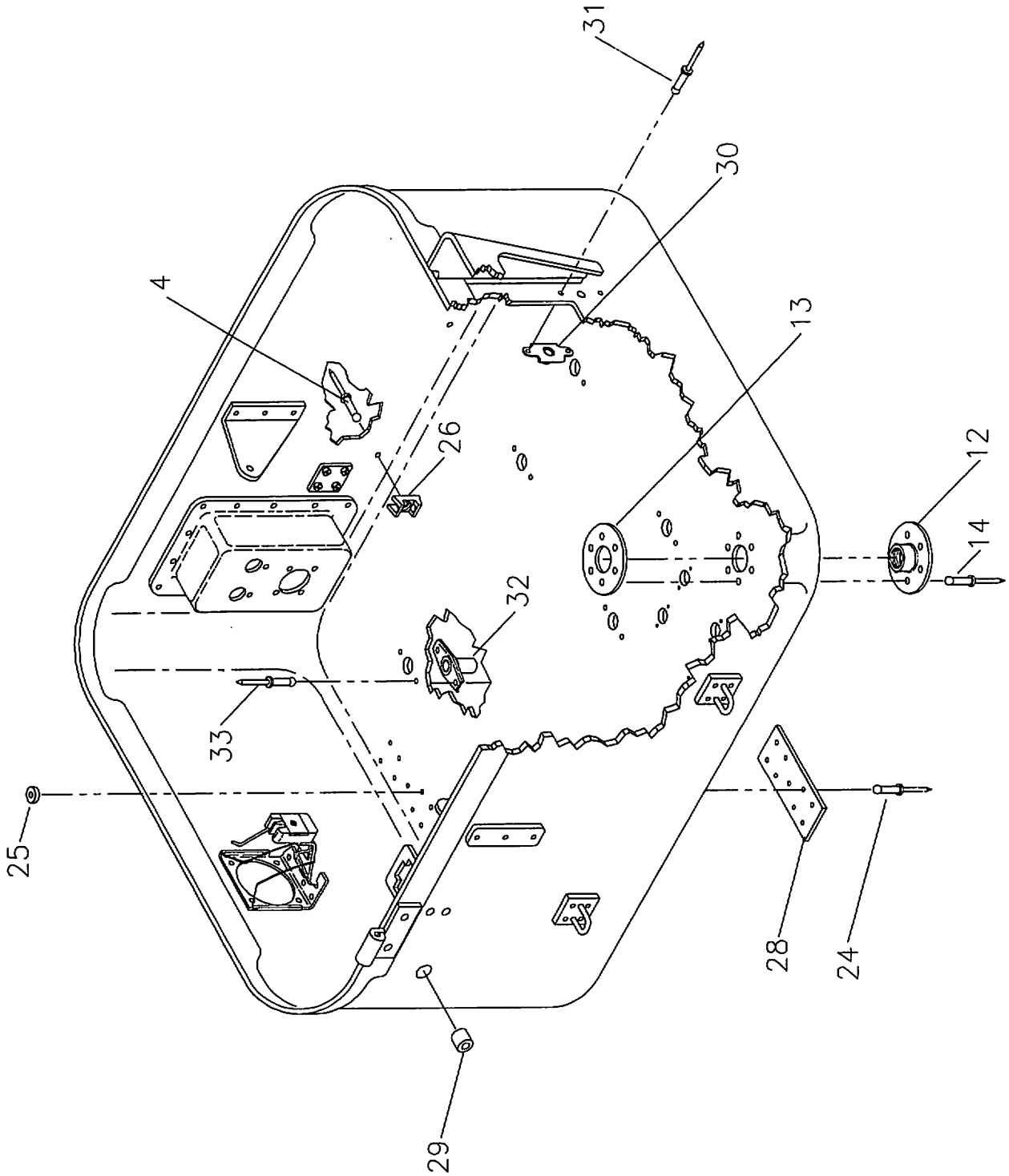
Item Number	Part Number	Description	Quantity
1	DA3501-3	MINI-PLASI ASSEMBLY	-
2	DA3502-1	LOWER HOUSING ASSEMBLY	1
3	DA3503-1	UPPER HOUSING ASSEMBLY	1
4	DA4400-1	PULSE GENERATOR ASSEMBLY	1
5	AN3-5A	BOLT	6
6	NAS1149D0332K	WASHER	6
7	AN3-6A	BOLT	2
8	NAS1149D0363K	WASHER	2
9	DA1430-1	LAMP	2
10	DA1435-1	SEAL	1
11	DA3304-1	POWER CORD ASSEMBLY	1
12	MS3106E16S-5S	CONNECTOR	1



IPL Figure 2 Lower Case Assembly



IPL Figure 2.1 Lower Case Assembly



**IPL Figure 2 & 2.1 Lower Case Assembly**

Item Number	Part Number	Description	Quantity
1	DA3504-1	LOWER CASE ASSEMBLY	-
2	DA3504-11	LOWER CASE (MADE FROM DA3316-1)	1
3	DA1068-11	CLIP	1
4	AD43H	RIVET	2
5	DA1461-3	LAMPHOLDER (SPARE)	1
6	MS20470A4-5	RIVET	2
	AD43H	RIVET	2
7	DA1480-11	TIE DOWN STAPLE	4
8	DA3321-11	DOUBLER PLATE	4
9	MS21044N08	NUT	16
10	NAS1149DN816K	WASHER	16
11	MS27039-0809	SCREW	16
12	DA3325-11	FLANGE	2
13	DA3329-11	DOUBLER PLATE	2
14	CR3213-5-6	RIVET	12
15	DA1208-15	HINGE HALF, FEMALE	1
16	DA1208-11	HINGE HALF, FEMALE	1
17	MS20470AD4-8	RIVET	4
18	DA3322-11	BRACKET-PULSE GENERATOR SUPPORT	1
19	DA3322-13	BRACKET-PULSE GENERATOR SUPPORT	1

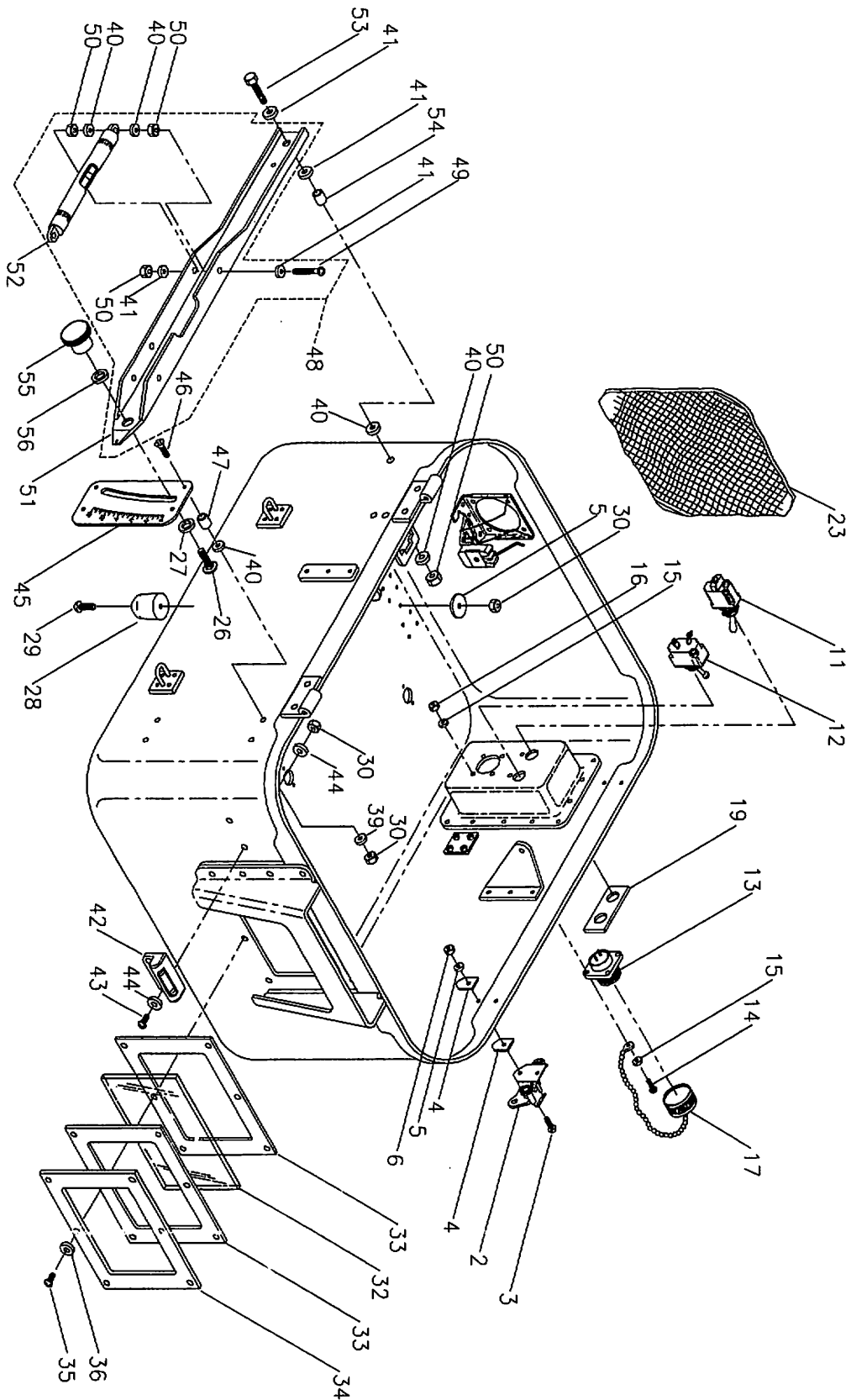


**IPL Figure 2 & 2.1 Lower Case Assembly (120 VAC)**

Item Number	Part Number	Description	Quantity
20	DA3377-11	DOUBLER PLATE	2
21	CR3213-4-6	RIVET	6
22	DA3020-1	WINDOW SHIELD ASSEMBLY	1
23	DA3338-11	SHIM	2
24	AD45H	RIVET	8
25	NAS1149DN432K	WASHER	6
26	TM1S4-M	CABLE TIE MOUNT	9
	AD43H	RIVET	9
27	DA3022-11	HOUSING	1
	AD43H	RIVET	14
28	DA3330-11	DOUBLER PLATE	1
	AD45H	RIVET	8
	NAS1149DN432K	WASHER	8
29	NAS43DD3-8	SPACER	5
30	MS21059L3	NUT PLATE	6
31	CCR264SS-3-3	RIVET	12
32	NAS1473A3	NUT PLATE	10
33	CCR264SS-3-4	RIVET	20

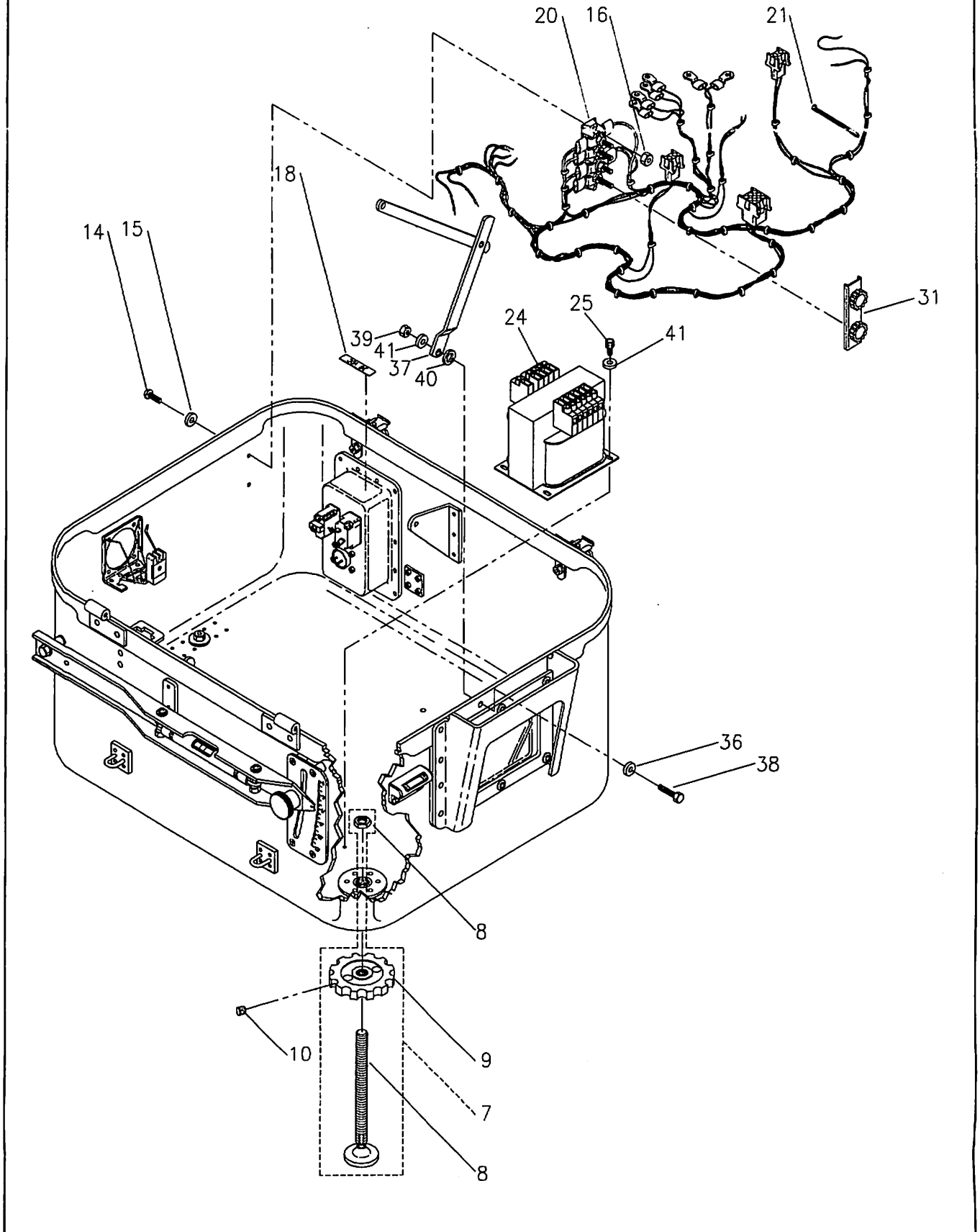


IPL Figure 3 Lower Housing Assembly



DEVORE AVIATION CORPORATION  
ALBUQUERQUE, NEW MEXICO, USA  
OF AMERICA

IPL Figure 3.1 Lower Housing Assembly



### IPL Figure 3 & 3.1 Lower Housing Assembly

Item Number	Part Number	Description	Quantity
-	DA3502-1	LOWER HOUSING ASSEMBLY	-
1	DA3504-1	LOWER CASE ASSEMBLY	1
2	2-57-1735-52	LATCH	2
3	MS27039-0808	SCREW	4
4	DA3339-1	SHIM	4
5	NAS1149DN832K	WASHER	4
6	MS21083-N08	NUT	4
7	DA3314-3	FOOT ASSEMBLY	2
8	80-0011	JIG FOOT ASSEMBLY	2
9	92311A190	SET SCREW	4
10	DA3324-11	ADJUSTMENT WHEEL	2
11	MS24523-23	SWITCH	1
12	MS24509-A-5	SWITCH/CIRCUIT BREAKER	1
13	MS3102E-16S-5P	CONNECTOR	1
14	MS35206-217	SCREW	4
15	NAS1149DN432K	WASHER	7
16	MS21044N04	NUT	4
17	MS25043-16D	CAP & CHAIN ASSEMBLY	1
18	DA3009-19	PLACARD	1
19	DA3009-15	PLACARD	1



## IPL Figure 3 & 3.1 Lower Housing Assembly

Item Number	Part Number	Description	Quantity
20	DA3509-5	WIRE HARNESS, LOWER	1
21	PLT1M	BLACK CABLE TIE	11
22	118-2B-11	BLACK SHRINK TUBE (NOT SHOWN)	1
23	DA3320-11	HEAT PAD SHIELD	1
24	MPI-250-28	TRANSFORMER	1
25	MS16998-29	SCREW	4
26	MS3571-40	CARRIAGE BOLT	1
27	NAS1149D0763K	WASHER	1
28	DA1459-1	BUMPER ASSEMBLY	1
29	MS35206-248	SCREW	1
	NAS1149DN832K	WASHER	1
30	MS21044N08	NUT	1
31	MS18029-1S-4	COVER	1
	MS35206-217	SCREW	2
	NAS1149DN432K	WASHER	2
	MS21044N04	NUT	2
32	DA1133-11	WINDOW	1
33	DA1132-11	GASKET	2
34	DA1134-11	FRAME	1
35	MS35207-266	SCREW	6



### IPL Figure 3 & 3.1 Lower Housing Assembly

Item Number	Part Number	Description	Quantity
36	NAS1149D0332K	WASHER	6
37	DA1216-11	SUPPORT HINGE	1
38	AN3-6A	BOLT	1
39	MS21083N3	NUT	1
40	00033084-1	WASHER	1
41	NAS1149D0363K	WASHER	1
42	DA1427-1	LEVEL-LATERAL	1
43	MS35206-246	SCREW	2
44	NAS1149DN816K	WASHER	4
	MS21044N08	NUT	2
45	DA3421-11	SCALE	1
46	MS24694-C12	SCREW	4
47	NAS42DD5-14	SPACER	4
	00033084-1	WASHER	8
48	DA3010-5	LEVELING ARM ASSEMBLY	1
49	MS35207-270	SCREW	2
	00033084-1	WASHER	4
50	MS21044N3	NUT	6
	NAS1149D0363K	WASHER	4
51	DA3010-5	LEVELING ARM	1

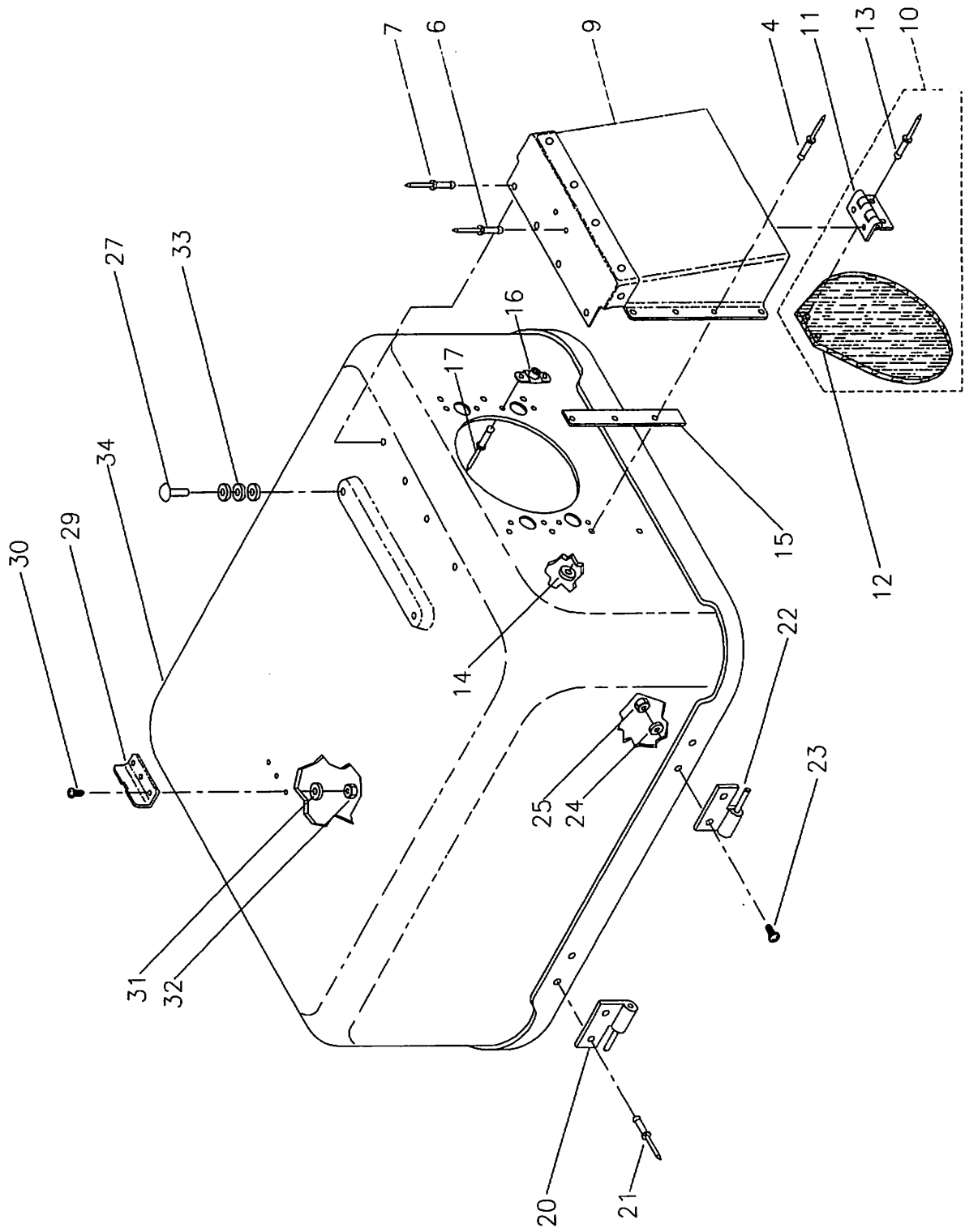


**IPL Figure 3 & 3.1 Lower Housing Assembly**

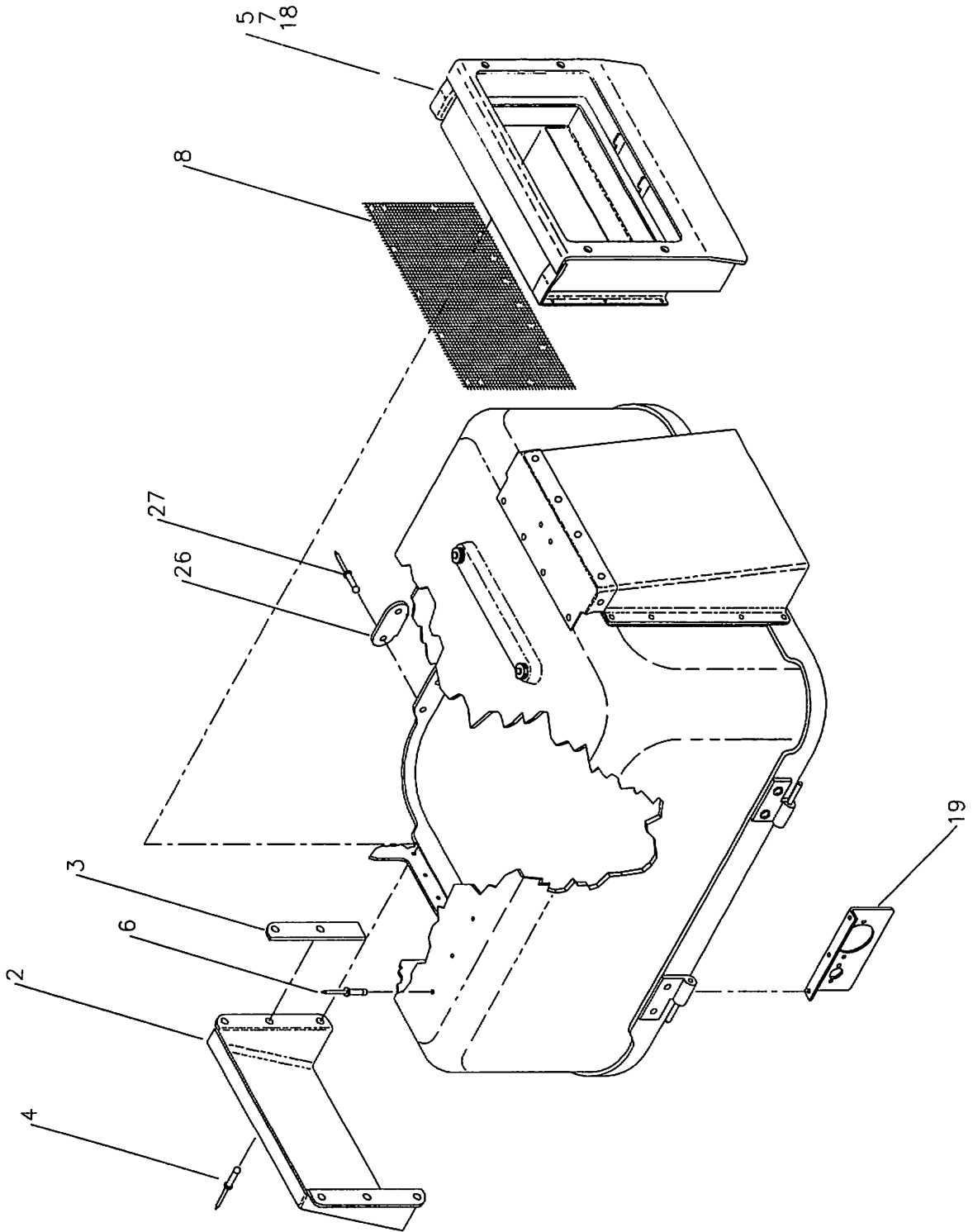
Item Number	Part Number	Description	Quantity
52	DA1417-1	LEVEL	1
53	AN3-10A	BOLT	1
	NAS1149D0363K	WASHER	2
54	NAS42DD6-16	SPACER	1
	00033084-1	WASHER	2
	MS21044N3	NUT	1
55	DA1485-11	KNURLED KNOB	1
56	NAS1149D0516K	WASHER	1



# IPL Figure 4 Upper Case Assembly



# IPL Figure 4.1 Upper Case Assembly



**IPL Figure 4 & 4.1 Upper Case Assembly**

Item Number	Part Number	Description	Quantity
1	DA3315-1	UPPER CASE ASSEMBLY	1
2	DA3015-11	AIR INLET SHROUD	1
3	DA3338-13	SHIM	2
4	AD45H	RIVET	8
5	DA3027-1	AIR FILTER DUCT ASSEMBLY	1
6	AD43H	RIVET	9
7	AD44H	RIVET	11
8	DA3031-11	SCREEN	1
9	DA3026-1	COVER ASSEMBLY	1
10	DA3014-1	FLAPPER DOOR ASSEMBLY	1
11	DA3014-13	HINGE	1
12	DA3014-11	DOOR	1
13	AD42ABS	RIVET	2
	AD43H	RIVET	2
	AD45H	RIVET	6
	AD44H	RIVET	4
14	NAS1149DN432K	WASHER	10
15	DA3338-15	SHIM	2
16	MS21059L06	NUT PLATE	4
17	CCR264SS-3-3	RIVET	8

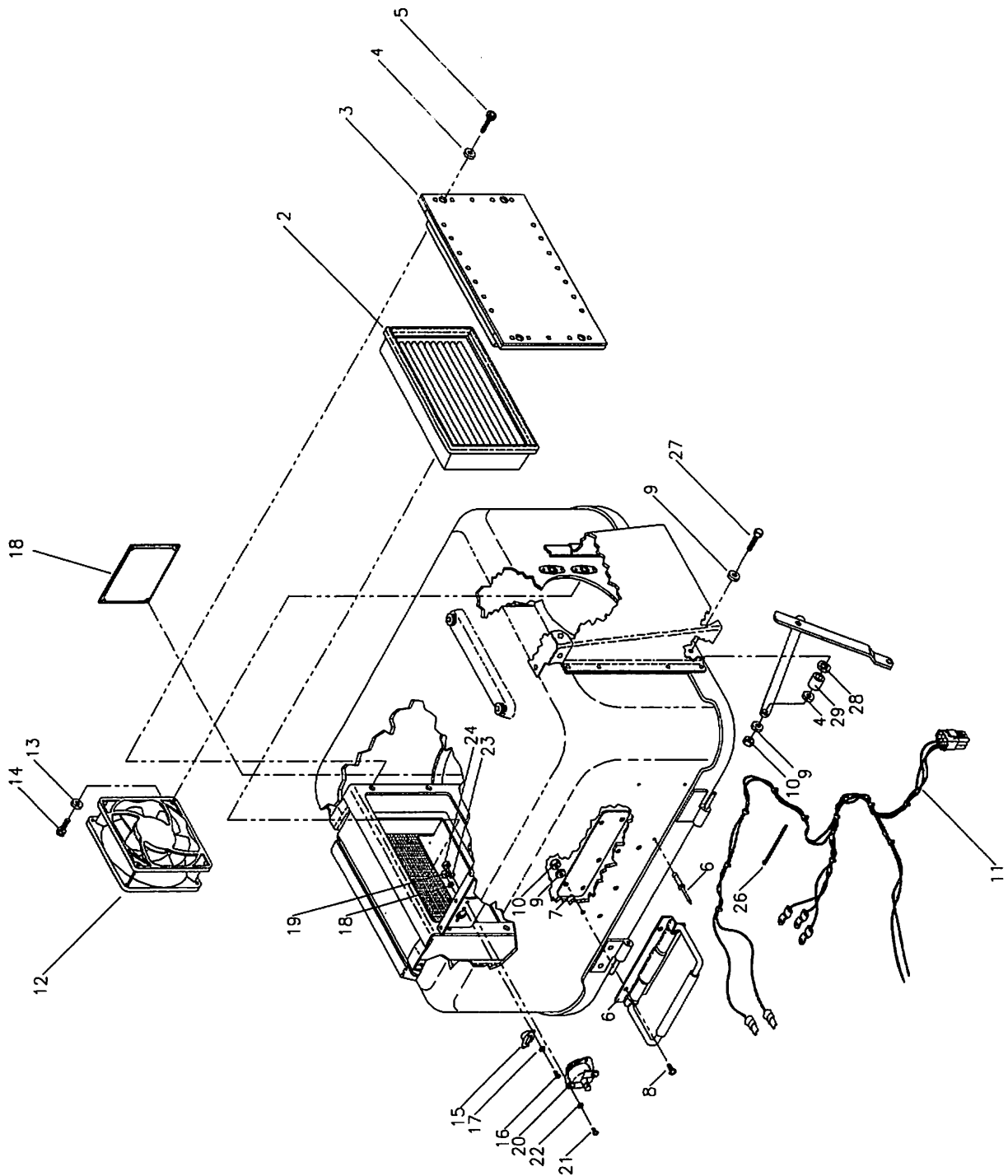


## IPL Figure 4 & 4.1 Upper Case Assembly

Item Number	Part Number	Description	Quantity
18	AK44H	RIVET	2
19	DA3028-11	BRACKET	1
	AD43H	RIVET	3
20	DA1208-13	HINGE HALF, MALE	1
21	MS20470AD4-8	RIVET	2
22	DA1208-17	HINGE HALF, MALE	1
23	MS27039-0808	SCREW	2
24	NAS1149DN832K	WASHER	2
25	MS21083N08	NUT	2
26	DA1482-11	KEEPER PLATE	2
	MS20470AD4-8	RIVET	4
28	TM1S4-M	CABLE TIE MOUNT (NOT SHOWN)	3
	AD43H	RIVET	3
29	DA3318-11	REAR SIGHT	1
30	MS35206-230	SCREW	3
31	NAS1149DN632K	WASHER	3
32	MS21044N06	NUT	3
	MS20470AD4-6	RIVET	2
33	NAS620-6	WASHER	6
34	DA3315-11	CASE (MADE FROM DA3319-1)	1



IPL Figure 5 Upper Housing Assembly



### IPL Figure 5 Upper Housing Assembly

Item Number	Part Number	Description	Quantity
-	DA3503-1	UPPER HOUSING ASSEMBLY	-
1	DA3315-1	UPPER CASE ASSEMBLY	1
2	DA1426-1	FILTER	1
3	DA3013-1	AIR FILTER COVER ASSEMBLY	1
4	NAS1149D0363K	WASHER	4
5	MS16998-29	SCREW, SOCKET HEAD	4
6	504-30-M15-ZB	HANDLE ASSEMBLY	2
7	DA3332-11	MOUNTING PLATE	2
8	MS35207-264	SCREW	10
9	NAS1149D0332K	WASHER	10
10	MS21083N3	NUT	10
11	DA3509-3	WIRE HARNESS, UPPER	1
12	DA1423-1	CIRCULATION FAN	1
13	NAS1149DN632K	WASHER	4
14	MS16997-22	SCREW, SOCKET HEAD	4
15	DA1408-1	THERMO SWITCH (50 DEGREES F)	1
16	MS35206-226	SCREW	2
17	NAS620-6	WASHER	2
18	NAS1149DN616K	WASHER	2
19	MS21083N06	NUT	2

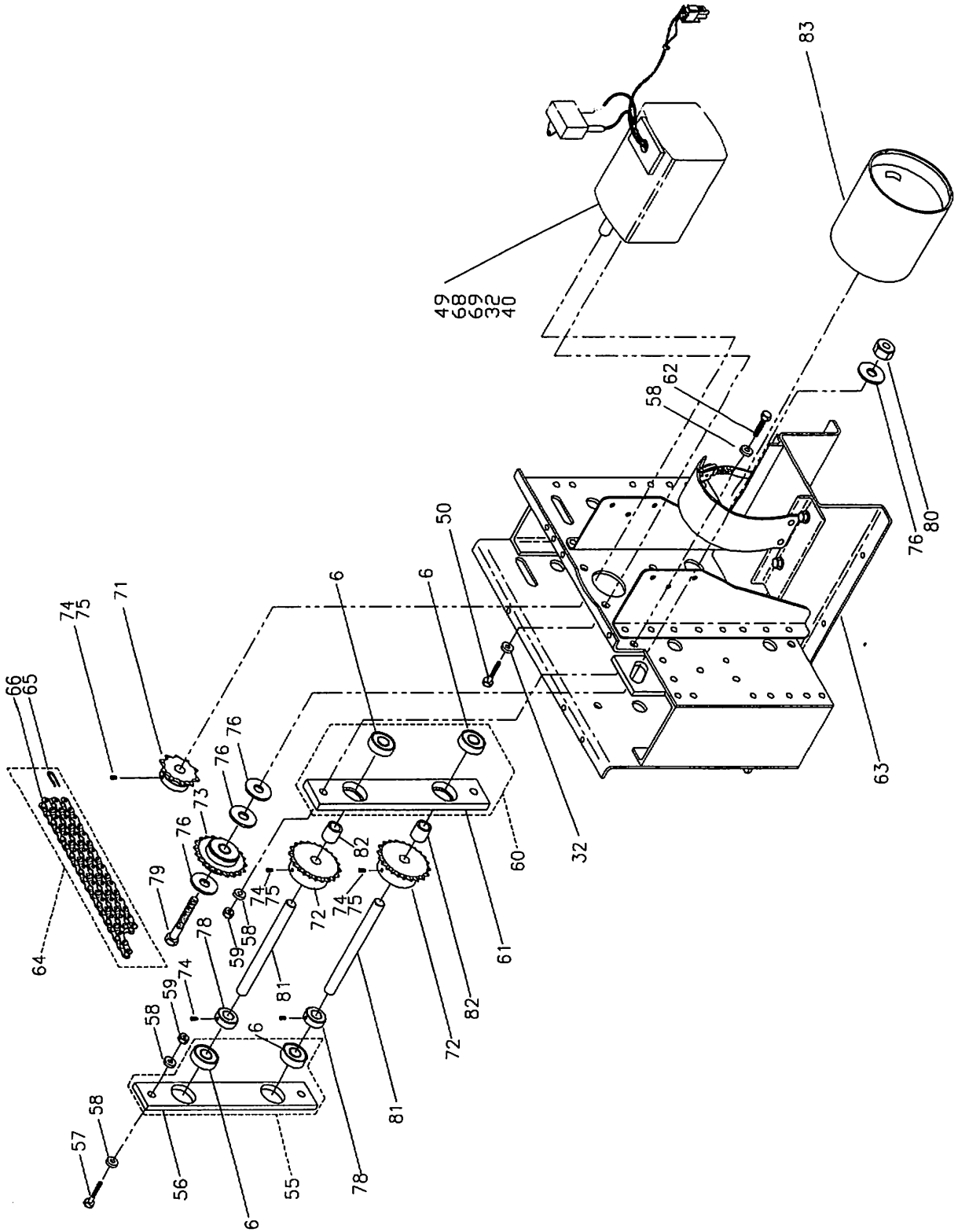


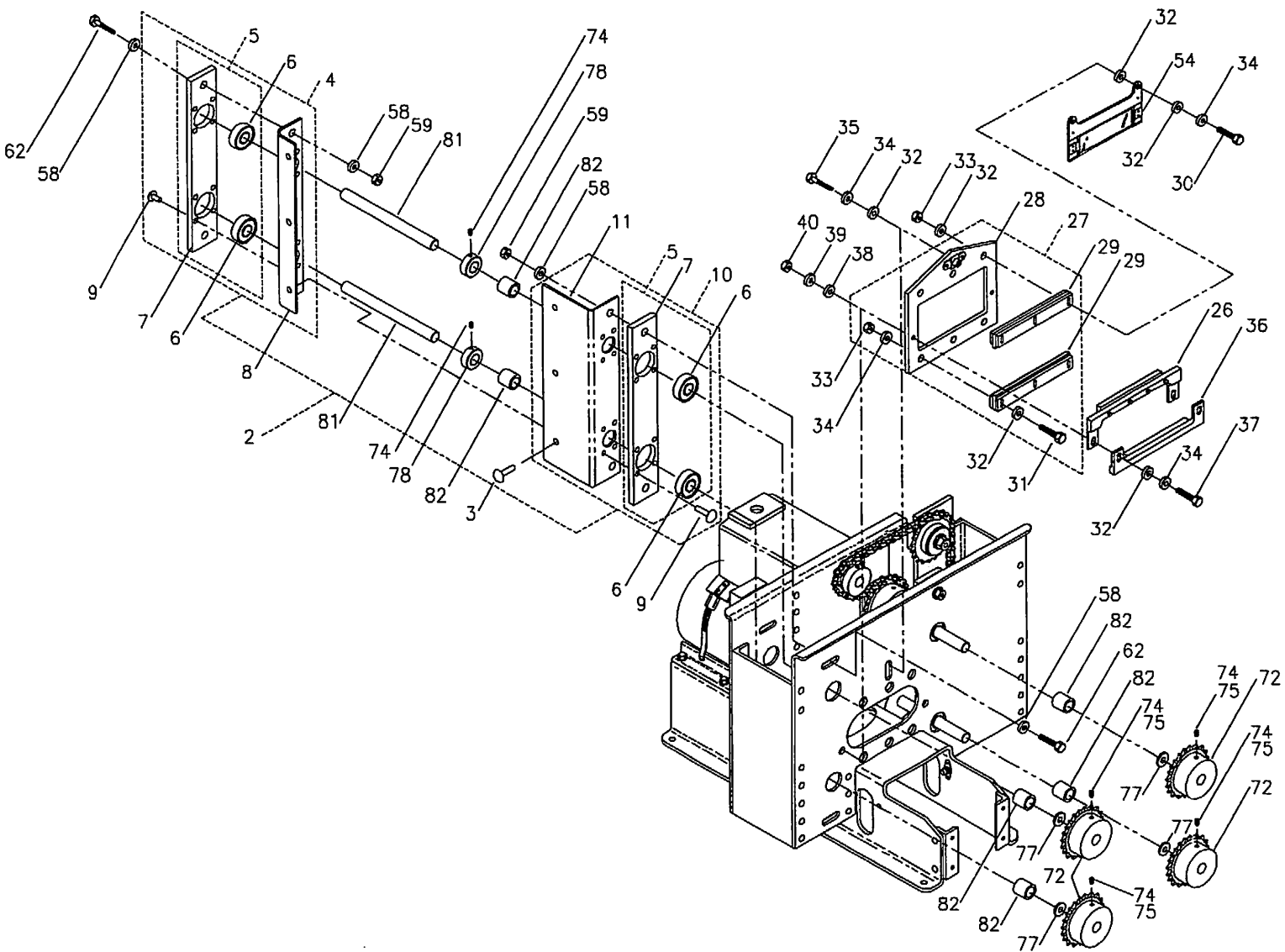
### IPL Figure 5 Upper Housing Assembly

Item Number	Part Number	Description	Quantity
20	DA1407-1	THERMO SWITCH (180 DEGREES F)	1
21	MS35206-242	SCREW	2
22	NAS620-8	WASHER	2
23	NAS1149DN816K	WASHER	2
24	MS21083N08	NUT	2
25	.188-2B-11	BLACK SHRINK TUBE (NOT SHOWN)	1
26	PLT1M-M0	BLACK CABLE TIE	3
27	AN3-10A	BOLT	1
	NAS1149D0332K	WASHER	1
28	00033084-1	WASHER	1
29	NAS43DD3-16	SPACER	1
	NAS1149D0363K	WASHER	2
	MS21083N3	NUT	1
30	DA1064-5	NAMEPLATE	1
31	AD34ABS	RIVET	4



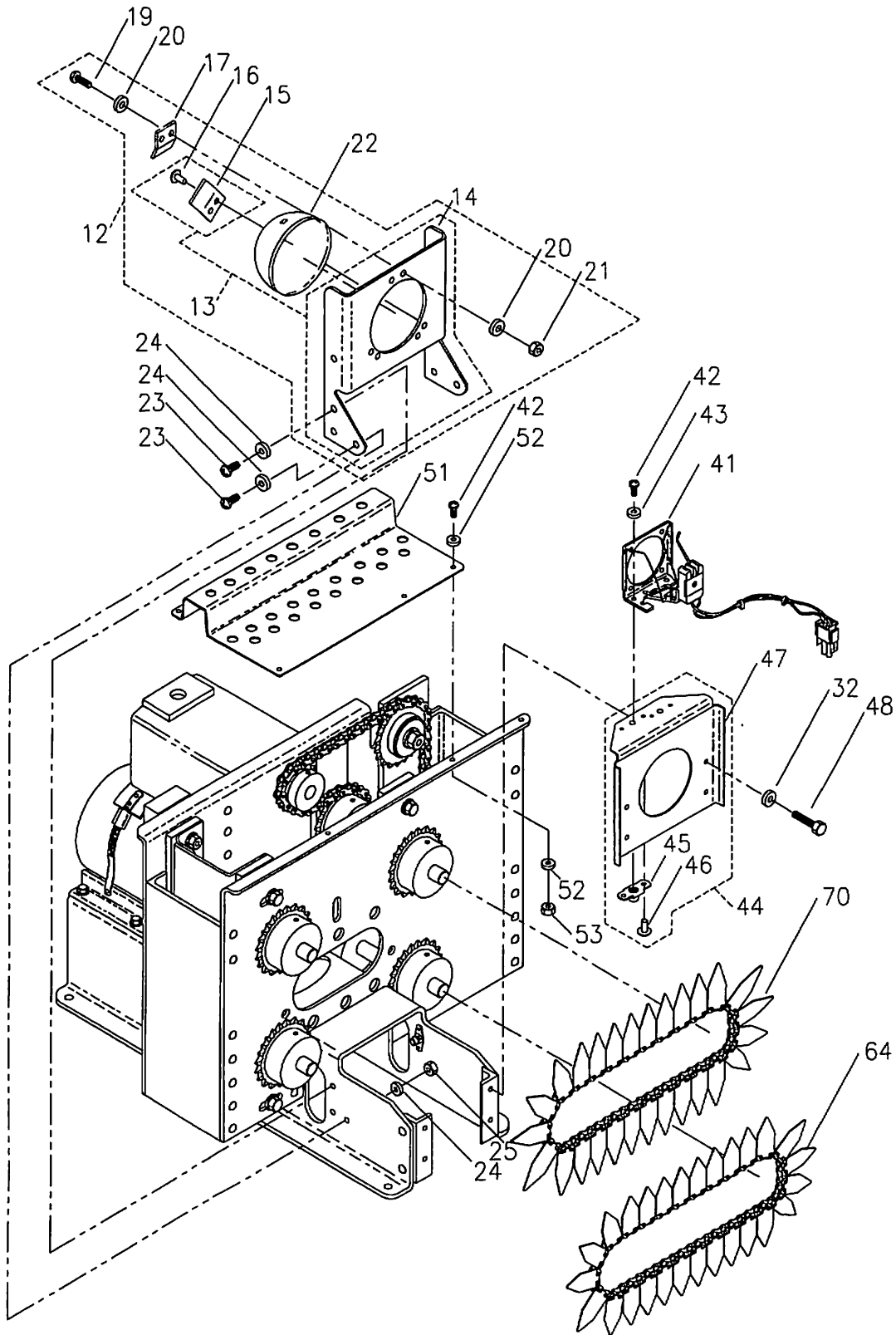
# IPL Figure 6 Pulse Generator Assembly





IPL Figure 6.1 Pulse Generator Assembly

IPL Figure 6.2 Pulse Generator Assembly



## IPL Figure 6, 6.1 & 6.2 Pulse Generator Assembly

Item Number	Part Number	Description	Quantity
1	DA4400-1	PULSE GENERATOR ASSEMBLY	1
2	DA4013-21	BEARING HOUSING ASSEMBLY	1
3	MS20470AD6-6	RIVET	3
4	DA4013-5	ANGLE ASSEMBLY	1
5	DA4016-3	HOUSING ASSEMBLY	1
6	DA1455-1	BEARING	2
7	DA4032-13	HOUSING	1
8	DA4026-13	ANGLE	1
9	MS20426AD5-9	RIVET	8
10	DA4013-3	ANGLE ASSEMBLY	1
	DA4016-3	HOUSING ASSEMBLY	1
	DA1455-1	BEARING	2
	DA4032-13	HOUSING	1
11	DA4026-11	ANGLE	1
	MS20470AD5-9	RIVET	8
12	DA1086-5	CONDENSER ASSEMBLY	1
13	DA1086-7	BRACKET ASSEMBLY	1
14	DA1087-13	BRACKET	1
15	DA1073-11	CLIP	2
16	MS20470AD3-5	RIVET	4



**IPL Figure 6, 6.1 & 6.2 Pulse Generator Assembly**

Item Number	Part Number	Description	Quantity
17	DA1117-11	CLIP	1
19	MS35206-229	SCREW	2
20	NAS1149FN616P	WASHER	4
21	MS21042L06	NUT	2
22	01-LAG023	CONDENSER LENS	1
23	MS27039-0808	SCREW	6
24	NAS1149DN832K	WASHER	10
25	MS21083N08	NUT	4
26	DA4018-3	GUIDE ASSEMBLY	1
27	DA4015-5	CHAIN GUIDE ASSEMBLY	1
28	DA4030-5	FRAME ASSEMBLY	1
29	DA1191-1	GUIDE ASSEMBLY	2
30	AN3-13A	BOLT	2
31	AN3-11A	BOLT	4
32	NAS1149D0363K	WASHER	12
33	MS21044N3	NUT	6
34	MS35338-43	LOCKWASHER	2
35	AN3-5A	BOLT	1
	MS35338-43	LOCKWASHER	1
	NAS1149D0363K	WASHER	1



## IPL Figure 6, 6.1 & 6.2 Pulse Generator Assembly

Item Number	Part Number	Description	Quantity
36	DA1189-1	GUIDE ASSEMBLY	1
37	MS27039-1-13	SCREW	2
38	NAS1149F0332P	WASHER	2
39	00033084-1	WASHER	2
40	MS21044N3	NUT	2
41	DA4105-1	LAMPHOLDER ASSEMBLY	1
42	MS35206-229	SCREW	2
43	NAS1149FN616P	WASHER	2
44	DA4101-1	BRACKET ASSEMBLY	1
45	MS21059L06	NUT PLATE	2
46	MS20426AD3-4	RIVET	4
47	DA4101-11	BRACKET	1
48	AN3-3A	BOLT	4
	NAS1149D0363K	WASHER	4
49	DA1183-1	MOTOR ASSEMBLY	1
50	AN3-4A	BOLT	4
	NAS1149D0363K	WASHER	4
51	DA4103-11	CHAIN GUARD	1
	MS35206-229	SCREW	5
52	NAS1149DN632K	WASHER	10



**IPL 1 Figure 6, 6.1 & 6.2 Pulse Generator Assembly**

Item Number	Part Number	Description	Quantity
53	MS21083N06	NUT	5
54	DA4017-1	FILTER ASSEMBLY	1
	NAS1149D0363K	WASHER	2
55	DA4016-1	HOUSING ASSEMBLY	1
56	DA4032-11	HOUSING	1
	DA1455-1	BEARING	2
57	AN4-6A	BOLT	2
58	NAS1149D0463K	WASHER	4
59	MS21083N4	NUT	2
60	DA4014-1	HOUSING ASSEMBLY	1
61	DA4028-11	HOUSING	1
	DA1455-1	BEARING	2
62	AN4-7A	BOLT	6
	NAS1149D0463K	WASHER	12
	MS21083N4	NUT	6
63	DA4012-3	HOUSING ASSEMBLY	1
64	DA4011-5	DRIVE CHAIN ASSEMBLY	1
65	35 S/C C/L	CONNECTING LINK	1
66	35-PITCH-CHAIN	35 PITCH ROLLER CHAIN	1
67	DA4011-1	SHUTTER CHAIN ASSEMBLY	1



## IPL Figure 6, 6.1 & 6.2 Pulse Generator Assembly

Item Number	Part Number	Description	Quantity
68	DA1460-3	CLAMP ASSEMBLY	1
69	DA4111-1	SPACER	2
	NAS1149D0363K	WASHER	2
	MS21044N3	NUT	2
70	DA1005-501	SHUTTER CHAIN ASSEMBLY	1
71	DA1047-11	SPROCKET	1
72	DA1046-11	SPROCKET	6
73	31E20	IDLER SPROCKET	1
74	91385A535	SET SCREW	18
75	91375A535	SET SCREW	12
76	NAS1149D0863K	WASHER	4
77	NAS1149F0832P	WASHER	4
78	CS-10	COLLAR	4
79	AN8-20A	BOLT	1
80	MS21083N8	NUT	1
81	DA1478-11	SHAFT	4
82	NAS43HT8-26	SPACER	8
83	113-070	OBJECTIVE LENS	1

