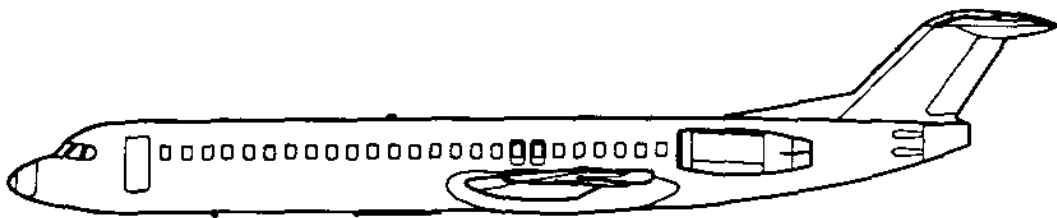


# ***Tei-Tail***<sup>®</sup>

LOGO LIGHT KIT

## **ILLUSTRATED PARTS CATALOG and SERVICE INSTRUCTIONS**



**MODEL: FOKKER 70 & 100**

**SERIES: ALL**

**Part Number 02833020**

**DEVORE AVIATION CORPORATION**  
OF AMERICA

6104 JEFFERSON, N.E. • ALBUQUERQUE, NEW MEXICO, U.S.A 87109-3410  
TELEPHONE (505) 345-8713 • FAX (505) 344-3835  
e-mail: devoreav@att.net • web site: www.devoreaviation.com





# DEVORE AVIATION CORPORATION

OF AMERICA

TO: HOLDERS OF ILLUSTRATED PARTS CATALOG AND SERVICE INSTRUCTIONS FOR TEL-TAIL LOGO LIGHT KIT INSTALLED ON FOKKER F70/F100 AIRCRAFT (DeVore Aviation Corporation of America lamphousing part numbers 02833020-1,-2,-3,-4)

REVISION NO. 01 DATED JULY 7, 2005

## HIGHLIGHTS

Pages which have been added or revised are outlined below together with the highlights of the revision.

---

Page No.	Description of Change	Effectivity
Title Page, 1	New manual date	All Models
Revision Record, RR-1	Added to track revision change record	All Models
Page 4	Reversed item numbers 6 and 7 on illustration To concur with parts list on page 3	All Models
Page 6	Reversed items numbers 6 and 7 on illustration To concur with parts list on page 5	All Models

Highlights  
Page 1 of 1  
July 7, 2005

## INTRODUCTION

This illustrated parts manual is designed to permit identification of replacement parts, when necessary, for the Fokker 70 and Fokker 100 Logo Light Kit. Parts lists identification will include the following information.

1. Figure column identifies the individual part with its corresponding illustration.
2. Part number column identifies the DeVore Aviation Corporation part number, AN, MS, NAS, or commercial part number used as original equipment.
3. Description column lists the function name of the identified part. This name is used when placing an order.
4. Quantity per assembly column provides for noted assembly and sub-assembly total requirements of each individual part.

NOTE: Duplication of parts may be required in particular assemblies or sub-assemblies. These parts, however, will not be given a different figure number. The quantity shown will indicate the quantities required for each assembly and not the quantity of the individual part as it is used in the over all product. Further explanation will be the example that follows.

5. A system of indentation under the Description column is used to simplify your order requirements. When a major assembly or sub-assembly is required for replacement, all the components within the respective assemblies will be provided. If an individual part within an assembly is required, you can order the part and the number you require separately. See the following Example:

Fig.1.0 Fokker 70 Lampholder Assembly (R H)			
Figure	Part Number	Description	Qty/Assy
-	02833020-3	Lampholder Assembly	1
1	MS21045-L3	Nut	4
2	AN960KD10	Washer	3
3	02833016-11	Distance Tube	2
4	MS24694-C3	Screw	12
5	MS21042-L3	Nut	1
6	02833021-1	Retainer Assembly	1
7	02833014-3	Bezel	1
8	02833009-1	Clamp	1
9	02833007-3	Cap Screw	2
10	02833007-1	Cap Screw	1

When ordering the 02833020-1 Lampholder Assembly, you will receive all the components indented under that assembly. You need not order any sub-assembly components of that assembly. If, however, you require only the replacement of the 02833021-1 Retainer Assembly you may order it separately.

**NOTE:** When ordering replacement components or assemblies, be sure that the mounting hardware for installation corresponds to the next higher assembly or installation procedure requirements.

**Example:** The mounting hardware for the 02833014-3 Bezel follows the listing. The Housing Assembly requires two 02833007-3 Cap Screws and one 02833007-1 Cap Screw. When in doubt look at the illustrations.

**\*\*\*\*NOTE\*\*\*\***

**DO NOT USE THIS MANUAL FOR ANY PURPOSE EXCEPT FOR ITS INTENDED USE AS A REPLACEMENT PARTS MANUAL.**

DeVore Aviation Corporation reserves the right to change or cancel any assemblies, assembly components, parts, parts lists, or illustrations represented here without prior notice. It further reserves the right to substitute components whenever such substitution does not interfere with the function operation of the Fokker Logo Light Assembly.

### Fig.1.0 Fokker 70 Lampholder Assembly (R H)

Figure	Part Number	Description	Qty/Assy
-	02833020-3	Lampholder Assembly	1
1	MS21045-L3	Nut	4
2	AN960KD10	Washer	3
3	02833016-11	Distance Tube	2
4	MS24694-C3	Screw	12
5	MS21042-L3	Nut	1
6	02833021-1	Retainer Assembly	1
7	02833014-3	Bezel	1
8	02833009-1	Clamp	1
9	02833007-3	Cap Screw	2
10	02833007-1	Cap Screw	1
11	02833006-1	Boot	1
12	02833024-1	Lens Assembly	1
13	00933022-5	Louvre Assembly	1
14	02833016-15	Distance Tube	1

### Fig.1.0 Fokker 70 Lampholder Assembly (L H)

Figure	Part Number	Description	Qty/Assy
-	02833020-4	Lampholder Assembly	1
1	MS21045-L3	Nut	4
2	AN960KD10	Washer	3
3	02833016-11	Distance Tube	2
4	MS24694-C3	Screw	12
5	MS21042-L3	Nut	1
6	02833021-2	Retainer Assembly	1
7	02833014-3	Bezel	1
8	02833009-1	Clamp	1
9	02833007-3	Cap Screw	2
10	02833007-1	Cap Screw	1
11	02833006-1	Boot	1
12	02833024-1	Lens Assembly	1
13	00933022-5	Louvre Assembly	1
14	02833016-15	Distance Tube	1

Fokker 70

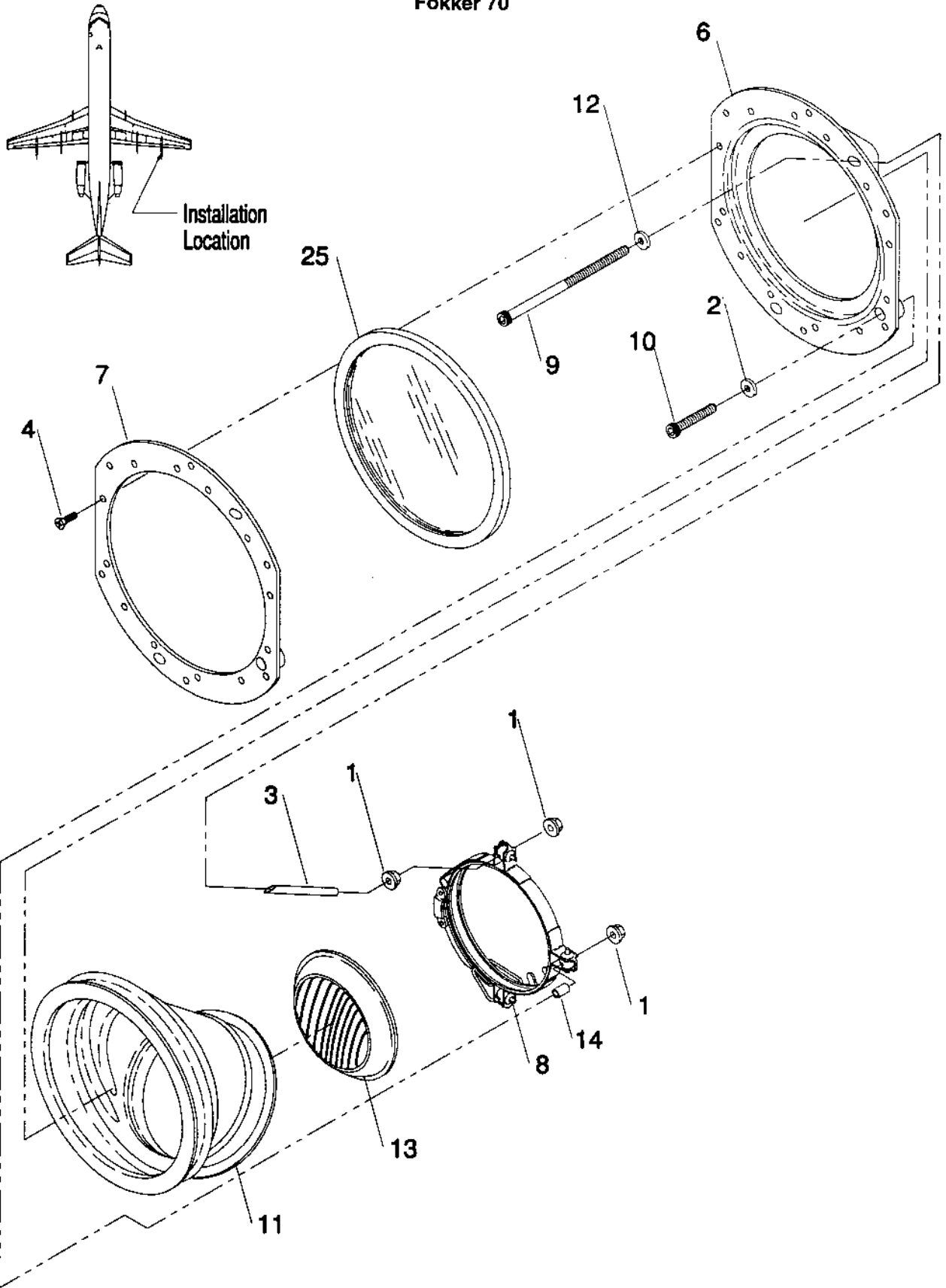


Fig. 1.0

### Fig.2.0 Fokker 100 Lampholder Assembly (R H)

Figure	Part Number	Discription	Qty/Assy
-	02833020-1	Lampholder Assembly	1
1	MS21045-L3	Nut	4
2	AN960KD10	Washer	3
3	02833016-11	Distance Tube	2
4	MS24694-C3	Screw	12
5	MS21042-L3	Nut	1
6	02833021-1	Retainer Assembly	1
7	02833014-3	Bezel	1
8	02833009-1	Clamp	1
9	02833007-3	Cap Screw	2
10	02833007-1	Cap Screw	1
11	02833006-3	Boot	1
12	02833024-1	Lens Assembly	1
13	00933022-5	Louvre Assembly	1
14	02833016-15	Distance Tube	1

### Fig. 2.0 Fokker 100 Lampholder Assembly (L H)

Figure	Part Number	Discription	Qty/Assy
-	02833020-2	Lampholder Assembly	1
1	MS21045-L3	Nut	4
2	AN960KD10	Washer	3
3	02833016-11	Distance Tube	2
4	MS24694-C3	Screw	12
5	MS21042-L3	Nut	1
6	02833021-2	Retainer Assembly	1
7	02833014-3	Bezel	1
8	02833009-1	Clamp	1
9	02833007-3	Cap Screw	2
10	02833007-1	Cap Screw	1
11	02833006-3	Boot	1
12	02833024-1	Lens Assembly	1
13	00933022-5	Louvre Assembly	1
14	02833016-15	Distance Tube	1

Fokker 100

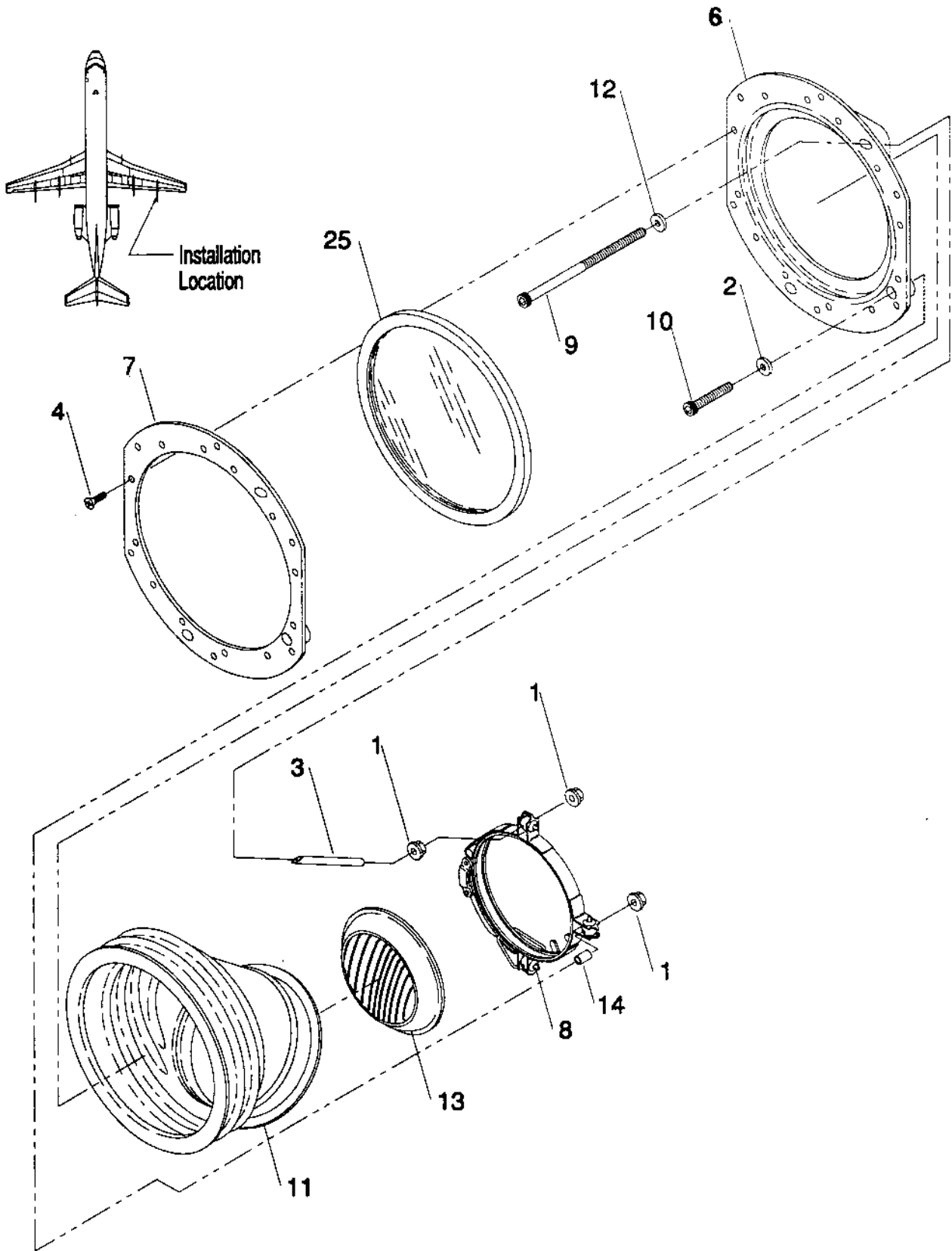


Fig. 2.0

## **INSPECTION REQUIREMENTS**

### **POSTFLIGHT INSPECTION**

1. Inspect both left and right TEL-TAIL flood (Logo) light installations located in the outboard flap-track as follows:

- a. Inspect the six (#10) phillips head screws around the bezel assembly, that secure the lamphousing assembly, to insure that they are in place and secure.
- b. Insure that the bezel is securely fastened to the lamphousing assembly by it's twelve attaching screws.
- c. Inspect the lens (window) for cracks or chipping and for cleanliness. Insure the lens is retained securely in the gasket.
- d. Inspect the boots for tears or holes.

2. With aircraft electrical power on, turn on the logo lighting system. Verify system operation, check switch position for correct control. Check that the light beams are targeted properly on the vertical stabilizer.

### **PROGRESSIVE MAINTENANCE INSPECTION PERIOD**

1. Remove the lamp housing from the flap-track fairing by unfastening the six (#10) phillips head screws around the bezel of the assembly. Do not back them out completely, since the screws are not captive and will fall out.

2. Inspect lamp wiring for chaffing and general condition.

3. Insure that the wire terminals are secured tightly to the terminals of the lamp.

4. Inspect the lens for cracks or chipping, and for cleanliness. Insure that the lens is retained in the gasket by the bezel.

5. Inspect the boot for tears, holes, and general condition. Insure that the boot is not pinched or crimped by the retaining clamp.

6. Inspect the retaining clamp for damage insure that it is locked and secured by the locking bail.

7. Inspect the louvre for any lose blades.

8. Inspect the lens gasket for cracking or separation and check for correct nesting in the retainer assembly.

9. Inspect to insure that the bezel is secured to the retainer assembly by its twelve attaching screws.

10. Inspect the doubler in the flap-track for cracking and general condition.

11. Reinstall the lamphousing assembly in the flap-track housing and secure with the six (#10) phillips head screws.

12. With the aircraft electrical power on, turn on the logo lighting system. Verify system operation, check the switch position for correct control, assure that the left hand circuit breaker controls the left hand light and the right hand circuit breaker controls the right hand light.

13. Check that the light beams are target properly on the vertical stabilizer. Readjust the light beam if necessary.

#### REPLACING LAMPS

1. Remove the lamphousing assembly from the flap-track fairing by unfastening the six (#10) phillips head screws around the bezel of the assembly. Do not back the screws completely out, since they are not captive and will fall out.
2. Disconnect the wiring.
3. Unlock the safety bail and open the clamp handle. Carefully remove the lamp. Do not disturb the adjusting screws.
4. Lightly coat the face of the boot in the area of the lamp contact surface with a high temperature anti-seize compound such as General Electric G-661
5. Carefully position the new lamp in the boot with the lamp indexing lug in it's proper position between the clamp indexing tabs, and make sure the boot will not be cut when the clamp is closed.
6. Close the lamp handle and the locking bail. Connect the wiring to the lamp and securely tighten the screws.
7. Reinstall the lamphousing assembly in the flap-track fairing and secure with the six (#10) phillips head screws around the bezel of the assembly.

#### LIGHT BEAM ADJUSTMENT

At night or in a darkened hangar, target the light beam on the vertical stabilizer logo using socket head adjustment screws. Turning the upper adjustment screw clockwise moves the beam down and forward. Turning the lower adjustment screw clockwise moves the beam up and forward. The combination of these adjustment screws will permit the proper lamp aiming, Do not force these screws should they become difficult to turn, as they may have reached the limit of their travel. By alternate use of the adjustment screws, there should be sufficient adjustment to reach any point on the vertical stabilizer. Adjust the lamp until the desired pattern on the vertical stabilizer is obtained.