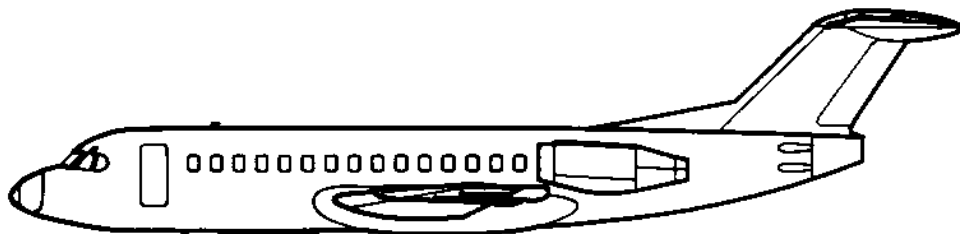


# ***Tei-Tail***®

## LOGO LIGHT KIT

### ILLUSTRATED PARTS CATALOG and SERVICE INSTRUCTIONS



MODEL - FOKKER F28

SERIES - ALL

KIT NO. - 02800001-1

SUPPLEMENTAL TYPE CERTIFICATE NO. SA2999WE(F28)

**DEVORE AVIATION CORPORATION**  
OF AMERICA

6104 JEFFERSON, N.E. • ALBUQUERQUE, NEW MEXICO, U.S.A 87109-3410  
TELEPHONE (505) 345-8713 • FAX (505) 344-3835  
e-mail: devoreav@att.net • web site: www.devoreaviation.com

07/07/05





# DEVORE AVIATION CORPORATION

OF AMERICA

TO: HOLDERS OF ILLUSTRATED PARTS CATALOG AND SERVICE  
INSTRUCTIONS FOR TEL-TAIL LOGO LIGHT KIT INSTALLED ON FOKKER  
F28 AIRCRAFT (DeVore Aviation Corporation of America lamphousing part  
numbers 02833008-21,-22)

REVISION NO. 01 DATED JULY 7, 2005

## HIGHLIGHTS

Pages which have been added or revised are outlined below together with the highlights of the revision.

---

Page No.	Description of Change	Effectivity
Title Page, 1	New manual date	All Models
Revision Record, RR-1	Added to track revision change record	All Models
Page 4	Reversed item numbers 17 and 18 on Fig. 1.1 To concur with parts list on page 1 and page 2	All Models

Highlights  
Page 1 of 1  
July 7, 2005

FIG. 1 FOKKER F28 LIGHT INSTALLATION (LH)

FIGURE	PART NUMBER	DESCRIPTION	QTY. PER ASSY
1	02833001-1	LIGHT INSTALLATION, LH	1
2	MS20470-AD4-5	RIVET	8
3	AN960-D10	WASHER	4
3	NAS1635-3-6	SCREW	4
4	NAS1097-AD4-5	RIVET	39
5	NAS560-CK3-0	SCREW	6
6	02833013-1	BRACKET ASSEMBLY, LH	1
7	02833012-5	DOUBLER ASSEMBLY, LH	1
8	02833012-3	SPACER	1
9	02833012-1	FILLER	1
10	02833008-21	LAMPHOLDER ASSEMBLY	1
11	MS21045-C3	NUT	4
12	AN960-PD10	WASHER	2
13	02833016-11	DISTANCE TUBE	2
14	NAS43-003-8	SPACER	1
15	MS24694-C3	SCREW	12
16	MS21043-3	NUT	1
17	02833015-9	RETAINER ASSEMBLY	1
18	02833014-3	BEZEL	1
19	02833009-1	CLAMP	1
20	02833007-7	CAP SCREW	2
21	02833007-1	CAP SCREW	1
22	02833006-1	BOOT	1
23	02833005-3	COVER LENS	1
24	02833004	GASKET	1
25	00933022-5	LOUVRE ASSEMBLY	1
26	310-12311-00	TRANSFORMER	1
27	NAS697A3	NUTPLATE	4
28	MS20426-AD4-5	RIVET	8
29	AN3-7A	BOLT	4

**DEVORE AVIATION CORPORATION**

OF AMERICA

6104 JEFFERSON, N.E. ! ALBUQUERQUE, NEW MEXICO, U.S.A 87109-3410

TELEPHONE (505) 345-8713 ! FAX (505) 344-3835

e-mail: devoreav@att.net ! web site: www.devoreaviation.com

FIG. 1 FOKKER F28 LIGHT INSTALLATION (RH)

FIGURE	PART NUMBER	DESCRIPTION	QTY. PER ASSY
1	02833001-2	LIGHT INSTALLATION, RH	1
2	MS20470-AD4-5	RIVET	8
3	AN960-D10	WASHER	4
4	NAS1635-3-6	SCREW	4
4	NAS1097-AD4-5	RIVET	39
5	NAS560-CK3-0	SCREW	6
6	02833013-2	BRACKET ASSEMBLY, RH	1
7	02833012-6	DOUBLER ASSEMBLY, RH	1
8	02833012-3	SPACER	1
9	02833012-1	FILLER	1
10	02833008-22	LAMPHOLDER ASSEMBLY	1
11	MS21045-C3	NUT	4
12	AN960-PD10	WASHER	2
13	02833016-11	DISTANCE TUBE	2
14	NAS43-D03-8	SPACER	1
15	MS24694-C3	SCREW	12
16	MS21043-3	NUT	1
17	02833015-10	RETAINER ASSEMBLY	1
18	02833014-4	BEZEL	1
19	02833009-3	CLAMP	1
20	02833007-7	CAP SCREW	2
21	02833007-1	CAP SCREW	1
22	02833006-1	BOOT	1
23	02833005-3	COVER LENS	1
24	02833004	GASKET	1
25	00933022-5	LOUVRE ASSEMBLY	1
26	310-12311-00	TRANSFORMER	1
27	NAS697A3	NUTPLATE	4
28	MS20426-AD4-5	RIVET	8
29	AN3-7A	BOLT	4

**DEVORE AVIATION CORPORATION**

OF AMERICA

6104 JEFFERSON, N.E. | ALBUQUERQUE, NEW MEXICO, U.S.A 87109-3410

TELEPHONE (505) 345-8713 | FAX (505) 344-3835

e-mail: devoreav@att.net | web site: www.devoreaviation.com

FIG. 1 FOKKER F28 LIGHT KIT

FIGURE	PART NUMBER	DESCRIPTION	QTY. PER ASSY
	02800001-1	FOKKER F28 LIGHT KIT	1
10	02833001-1	LIGHT INSTALLATION, LH (ITEM 10 PAGE 1)	1
10	02833001-2	LIGHT INSTALLATION, RH (ITEM 10 PAGE 2)	1
30	2TC14-3	CIRCUIT BREAKER	2
31	50845-1	TERMINAL	4
32	72733039-3	PLACARD	1
33	72733039-5	PLACARD	1
34	72733039-7	PLACARD	1
35	MS24524-13	SWITCH	1
36	Q4632	LAMP	2

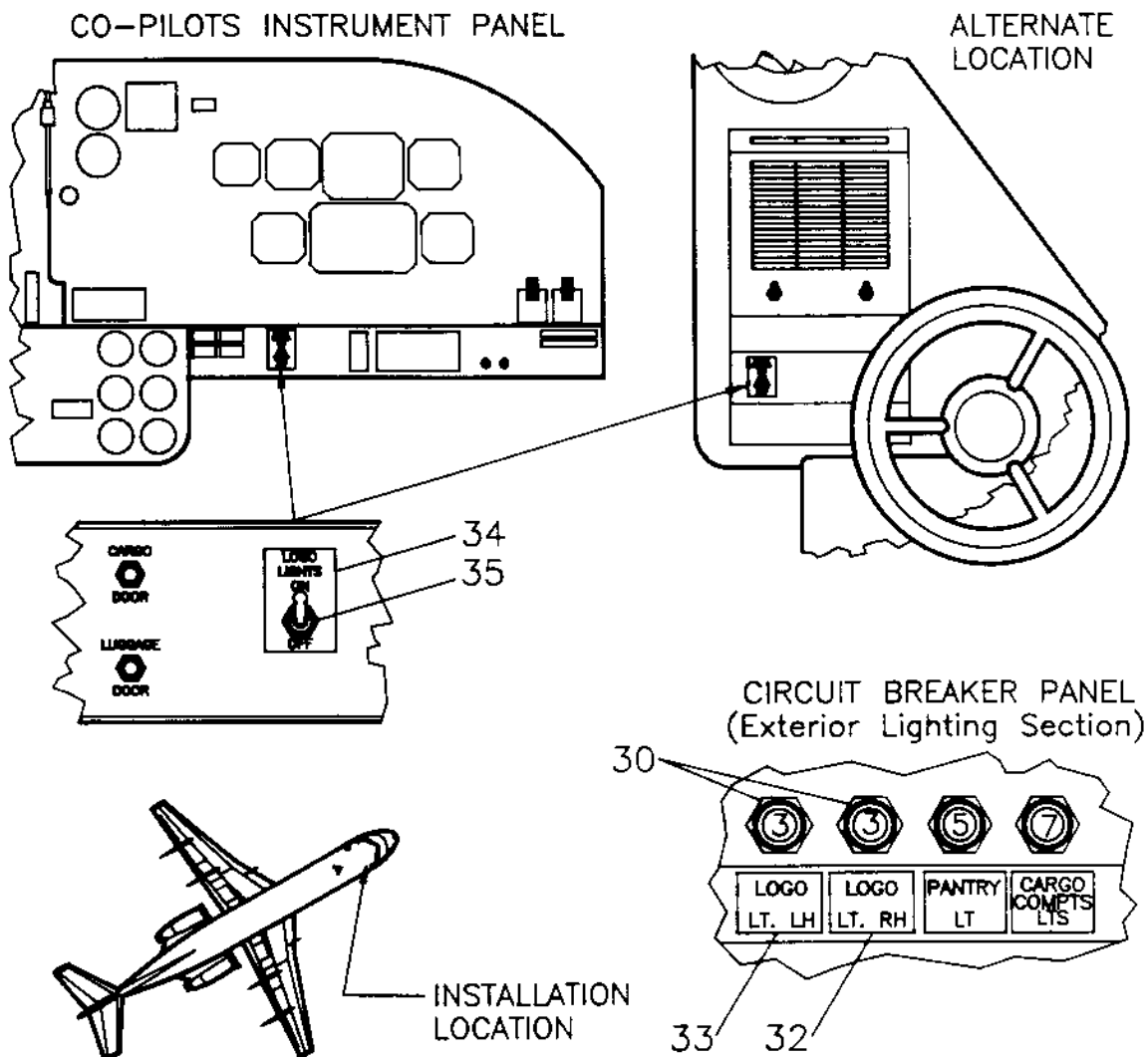


FIG. 1.0

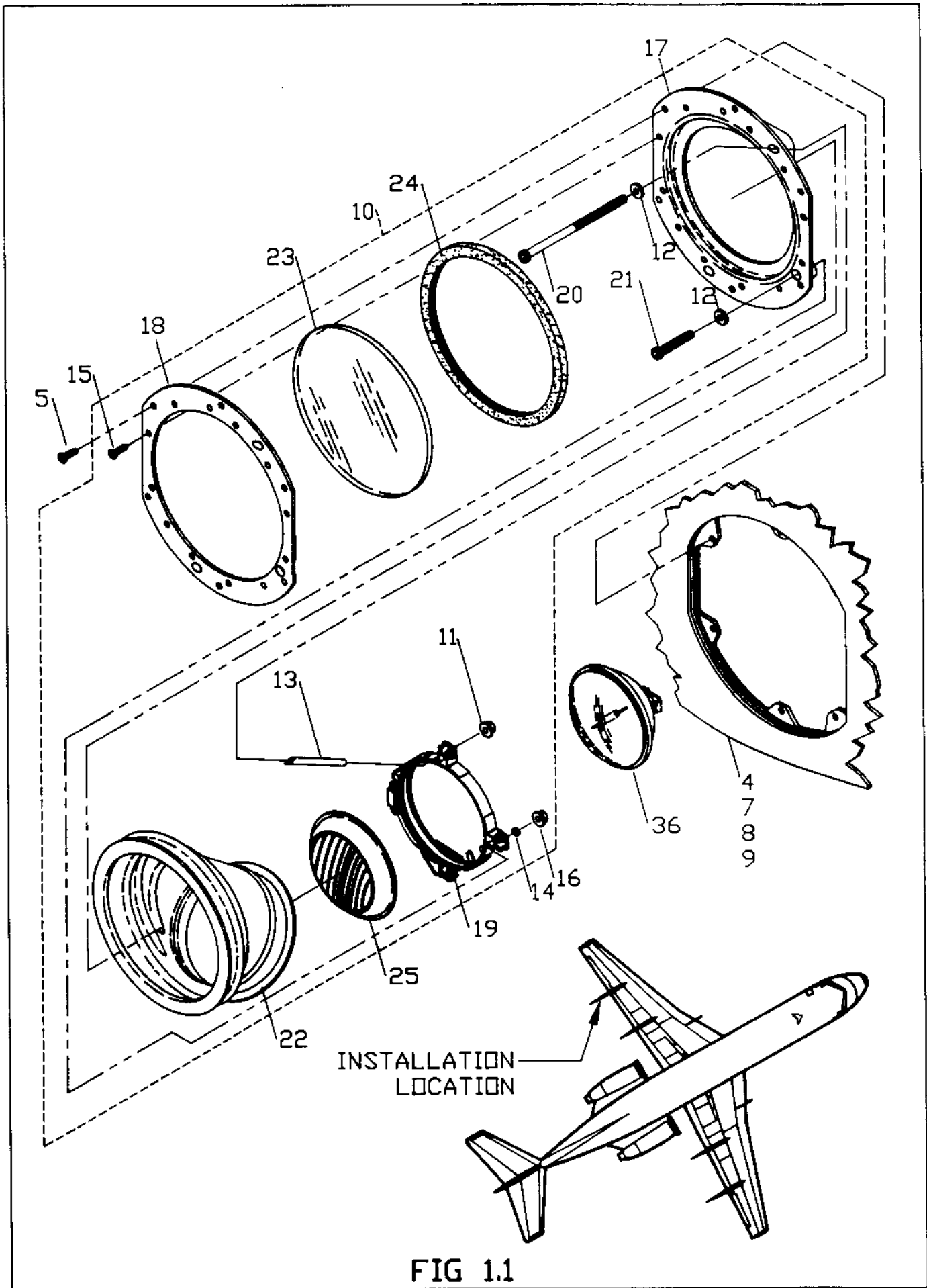


FIG 1.1

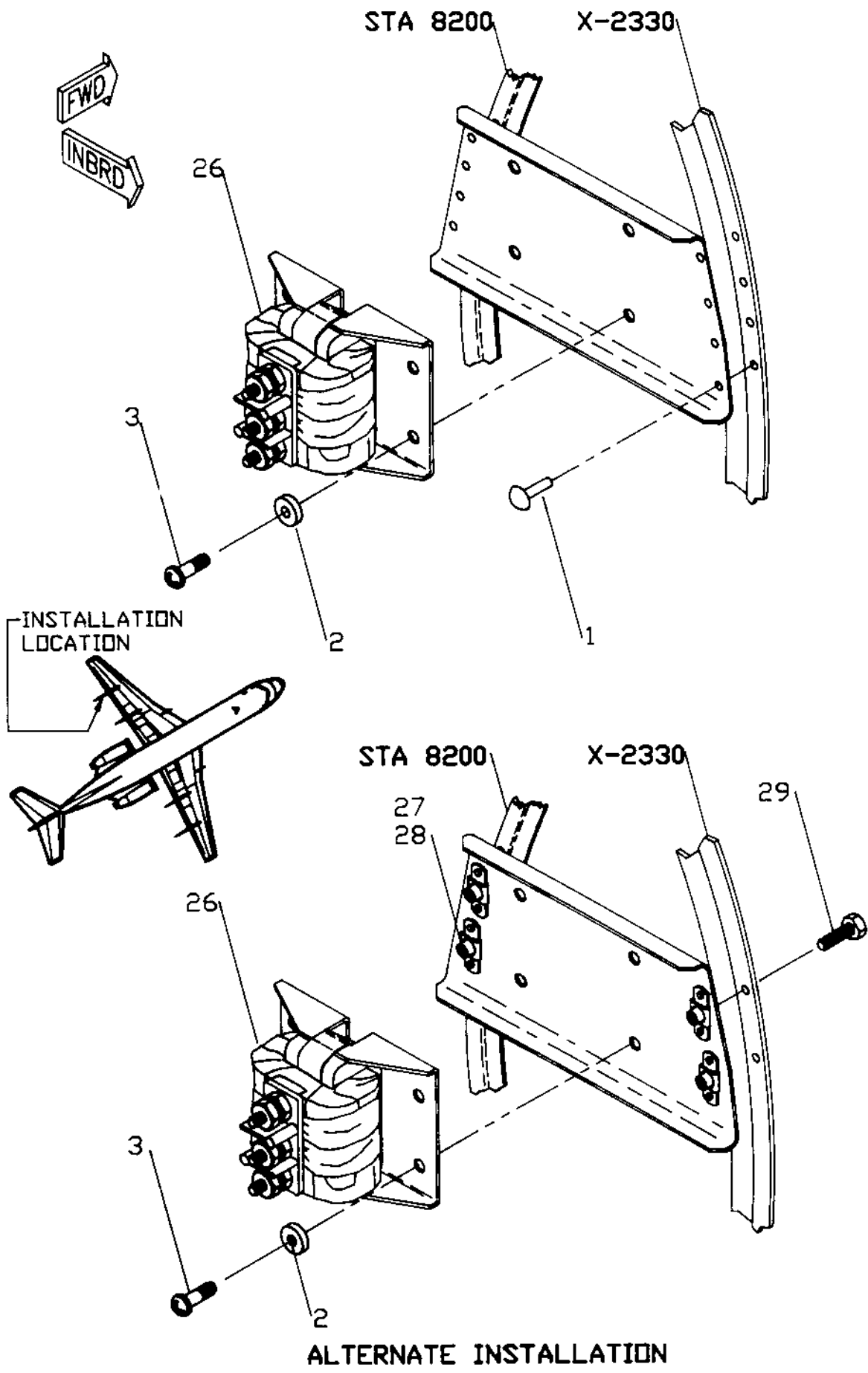


FIG. 1.2

## **INSPECTION REQUIREMENTS**

### **POSTFLIGHT INSPECTION**

1. Inspect both left and right hand TEL-TAIL flood (Logo) light installations located in the outboard flap-track fairings as follows:
  - a. Inspect that the twelve (#10) phillips head screws around the bezel assembly, that secures the lamphousing assembly, are in place and secure.
  - b. Insure the bezel is securely fastened to the lamphousing assembly by its attaching screws.
  - c. Inspect the lens (window) for cracks or chipping and for cleanliness. Insure the lens is retained securely in the gasket by the bezel.
  - d. Inspect boots for tears or holes.
2. With aircraft electrical power on, turn on the logo lighting system. Verify system operation, check switch position for correct control. Check that the light beams are targeted properly on the vertical stablizer.

### **PROGRESSIVE MAINTENANCE INSPECTION PERIOD.**

1. Remove the lamp housing from the flap-track fairing by unfastening the twelve (#10) phillips head screws around the bezel of the assembly. Do not back them out completely, since the screws are captive and will not fall out.
2. Inspect lamp wiring for chaffing and general condition.
3. Insure wire terminals are secured tightly to the terminals of the lamp.
4. Inspect the lens for cracks or chipping, and for cleanliness. insure the lens is retained securely in the gasket by the bezel.
5. Inspect the boot for tears, holes, and general condition. Insure the boot is not pinched or crimped by the lamp retaining clamp.
6. Inspect the lamp retaining clamp for damage and that it is locked and secured by the locking bail.
7. Inspect the louvre for any loose or failed blades.
8. Inspect the lens gasket for cracking or separation and insure correct nesting in the retainer assembly.

9. Inspect that the bezel is secured to the retainer assembly by its six attaching screws.
10. Inspect the doubler in the flap track fairing for cracking and general condition.
11. Reinstall the lamp housing assembly in the flap-track housing and secure with the twelve (#10) phillips head screws.
12. With the aircraft electrical power on, turn on the logo lighting system. Verify system operation, check switch position for correct control, assure that the left hand circuit breaker controls the left hand light and the right hand circuit breaker controls the right hand light.
13. Check that the light beams are targeted properly on the vertical stabilizer. Readjust the light beam, if necessary.

#### REPLACING LAMPS

1. Remove the lamp housing assembly from the flap track fairing by unfastening the twelve (#10) phillips head screws around the bezel off the assembly. Do not back the screws out completely, since they are captive and will not fall out.
2. Disconnect the wiring.
3. Unlock the clamp safety bail and open the clamp handle. Carefully remove the lamp. Do not disturb the adjusting screws.
4. Lightly coat the inside face of the boot in the area of the lamp contact surface with a high temperature anti-seize compound such as General Electric G-661.
5. Carefully position the new lamp in the boot with the lamp indexing lug in its proper position between the clamp indexing tabs, and make sure the boot will not be cut when the clamp is closed.
6. Close the clamp handle and the locking bale. Connect the wiring to the lamp and securely tighten the screws.
7. Reinstall the lamp housing assembly in the flap-track fairing and secure with the twelve (#10) phillips head screws around the bezel of the assembly.

## LIGHT BEAM ADJUSTMENT

At night or in a darkened hangar, target the light beam on the vertical stabilizer logo using the socket head adjustment screws. Turning the upper screw clockwise moves the beam down and forward. Turning the lower screw clockwise moves the beam up and forward. The combined use of these screws will permit proper lamp aiming. Do not force these screws should they become difficult to turn, as they may have reached the limit of their travel. By alternate use of the screws, there should be sufficient adjustment to reach any point on the vertical stabilizer. Adjust each lamp until the desired pattern on the vertical fin is obtained.

# **DEVORE AVIATION CORPORATION**

OF AMERICA

6104 JEFFERSON, N.E. • ALBUQUERQUE, NEW MEXICO, U.S.A 87109-3410  
TELEPHONE (505) 345-8713 • FAX (505) 344-3835  
e-mail: devoreav@att.net • web site: www.devoreaviation.com