

***Tel-Tail***®

**VERTICAL TAIL FLOODLIGHTS**

**ILLUSTRATED PARTS CATALOG  
and  
SERVICE INSTRUCTIONS**

**BUSINESS/GENERAL AVIATION AIRCRAFT**

**DUAL LAMP ASSEMBLY**

**28 VDC SYSTEM**

**No. 00033168**

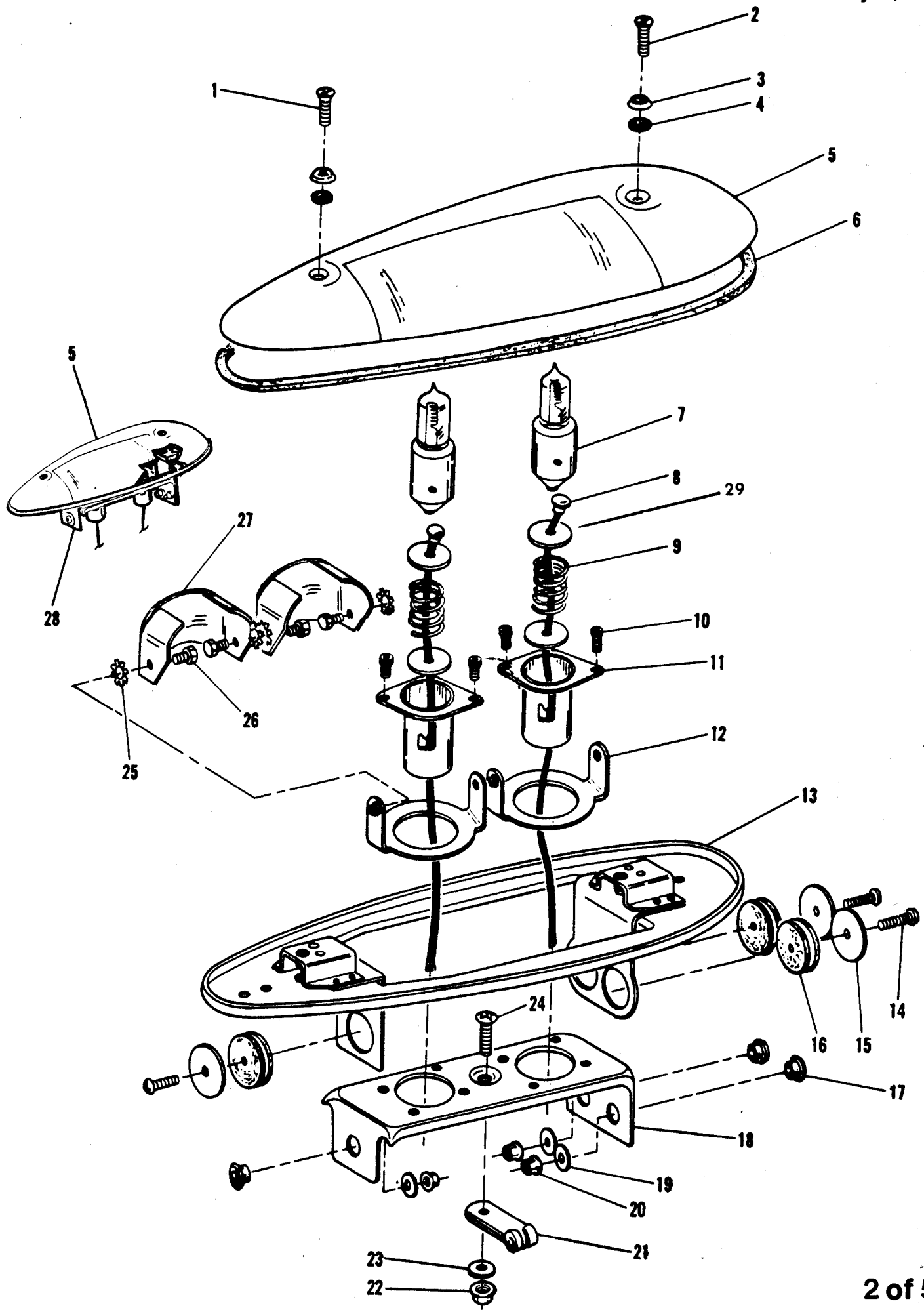
**Issued May 19, 1983**

**DE VORE AVIATION CORPORATION**



6104B KIRCHER BLVD. N.E.  
ALBUQUERQUE, NEW MEXICO 87109  
(505) 345-8713

**TELEX: 660-436**



DE VORE AVIATION CORPORATION  
 "TEL-TAIL" VERTICAL TAIL FLOODLIGHT

May 19, 1983

00033168

ITEM NO.	PART NUMBER	DESCRIPTION	QUANTITY
1	MS24694-C13	Screw	1
2	MS24694-C15	Screw	1
3	NAS391B6P	Trim Washer	2
4	AS-201	"O" Ring	2
5	00033102 (See Notes)	Cover Assy.	1
6	00003022-3	Gasket	1
7	DA-27	Lamp	2
8	00003028-1	Contact Assy.	2
9	00003020-1	Spring	2
10	MS24677-1	Screw	4
11	00003001-1	Lamp Holder Assy.	2
12	00003046-1	Yoke Assy.	2
13	00003032-3	Base Assy.	1
14	MS35208-28	Screw	3
15	00003041-11	Washer	3
16	MS35489-2X	Grommet	3
17	00033046-3	Isolator	3
18	00003038-1(LH) /-2(RH)	Platform Assy.	1
19	AN960-6	Washer	3
20	MS21042-06	Nut	3
21	TA1718SS02X	Clamp	1
22	MS21042-08	Nut	1
23	AN960-8	Washer	1
24	MS35208-42	Screw	1
25	MS35335-86	Washer, Lock	4
26	TF538C6-4 (6-32X $\frac{1}{2}$ Hex)	Screw	4
27	00003004-3	Reflector	2
28	00033168-101(LH) /-102(RH)	Complete Assy. Less Cover	1
29	00003007-1	Washer	4

- NOTES:
- 00033168-1 (LH)/-2 (RH) Upright Light Assy. Consists of: Item 28 and 00033102-1 (LH)/-2 (RH) Cover Assy.
  - 00033168-5 (LH)/-6 (RH) Inverted Light Assy. Consists of: Item 28 and 00033102-3 (LH)/-4 (RH) Cover Assy.
  - 00033168-9 (LH)/-10 (RH) Upright Light Assy. Consists of: Item 28 (-102 L.H./-101 R.H.) and 00033102-1 (LH)/-2 (RH) Cover Assy.
  - 00033168-17 (LH)/-18 (RH) Upright Light Assy. Consists of: Item 28 and 00033102-5 (LH)/-6 (RH) Cover Assy.

**DEVORE AVIATION CORPORATION**  
**'TEL-TAIL' VERTICAL TAIL FLOODLIGHT**  
**DUAL LAMP ASSEMBLY**

**GENERAL SERVICE INSTRUCTIONS:**

Periodically check coverage and brilliance of illumination. Observe light pattern in an outside dark area or darkened hangar. If the vertical tail surface is not uniformly and brilliantly illuminated, need for lamp replacement and/or reflector adjustment is generally indicated. Follow procedures on Page 5.

**PRECAUTIONS:**

1. When operating lamps with cover glass removed, wear safety glasses or equivalent eye protection. Do not look directly at lamp filament.
2. Lamps and reflectors become extremely hot — use extreme care while making adjustments.
3. Handling lamps with bare fingers will deposit fingerprints and skin oil on lamp. Remove, before illumination, by cleaning with a grease free solvent such as acetone. Use 00033098-1 Lamp Removal Tool included in kit to remove or replace lamps.
4. To properly secure the cover assembly to the base assembly the following torque limits should be used when installing the cover. The screws should be tightened to the point that the cover is properly seated on the gasket and the "O" ring under the hold down screw washer is compressed without undue strain on the glass.

**TORQUE LIMITS**

8 IN. LBS. MIN

9 IN. LBS. MAX

**PARTS SUBSTITUTION:**

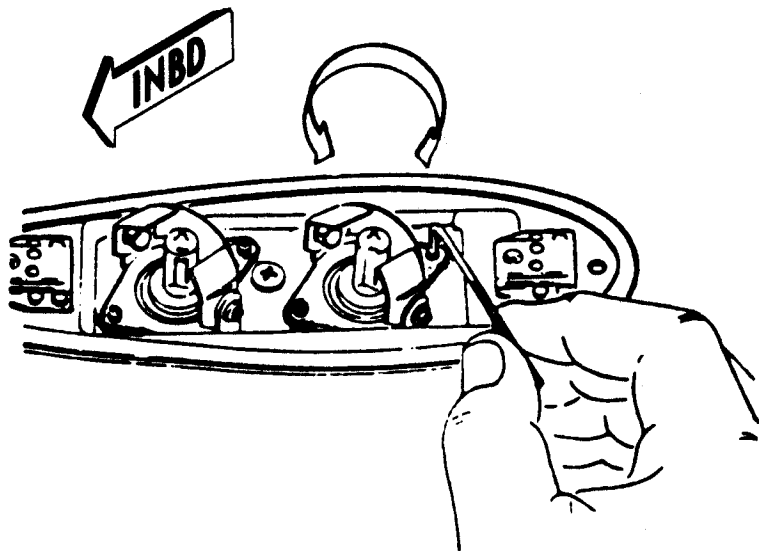
1. 00033094 Cover Glass Assy., with MS24694C11 and MS24694C13 screws may be substituted for 00033102 Cover Glass Assy.

## INSTRUCTIONS FOR LAMP ADJUSTMENT

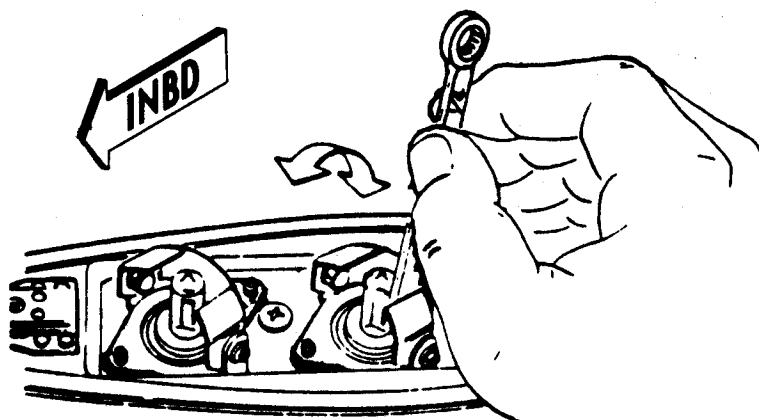
ISOLATOR MOUNTING

## ADJUSTMENT PROCEDURE:

1. Turn lights off and allow lamps to cool.
2. Remove cover glass.



3. Loosen the two (2) capscrews on the lamp-holder of each lamp (bottom of assembly base) to allow the reflector to be rotated around the lamp.



4. Loosen the two (2) 1/4 Hex-head screws (on either side of lamp) in the reflector yoke assembly, to allow the reflector to be tilted.
5. Open the circuit breaker for the fixture that is not being adjusted to prevent heat build up.
6. Aim forward and aft reflectors to give best illumination of vertical tail surfaces.

CAUTION: WHEN ADJUSTING THE REFLECTOR AND YOKE OF VIBRATION ISOLATION LIGHT ASSEMBLIES, MAINTAIN A MINIMUM CLEARANCE OF .060 INCHES FROM BASE OR COVER TO ASSURE SHOCK MOUNT OPERATION.

7. Turn on aircraft DC power and actuate "TEL-TAIL" Tail Floodlight switch
8. Observe the light pattern and reposition reflectors if necessary.
9. Temporarily attach the cover glass to the fixture without tightening screws.
10. Observe that cover glass changes light pattern to provide uniform coverage.
11. Reposition reflectors if required for even coverage.

NOTE: It is much easier to adjust the reflectors with lamps turned off and permitted to cool.

12. After adjustment is complete, turn off electrical power and securely tighten adjustment screws. Make sure tightening of screws has not changed adjustment.
13. Install cover glass. Do not overtighten screws.
14. Repeat the adjustment procedure on fixture on the other side of the airplane.

## LAMP REPLACEMENT:

1. Remove cover glass.
2. Use 0033098-1 removal and replacement tool.
3. It is important that firm pressure be maintained between the lamp and socket contacts to preclude contact corrosion and lamp overheating. If corrosion or excessive looseness is found during lamp changes, check Item 9 Springs for compression strength. Stretch or replace springs as necessary to maintain firm contact.